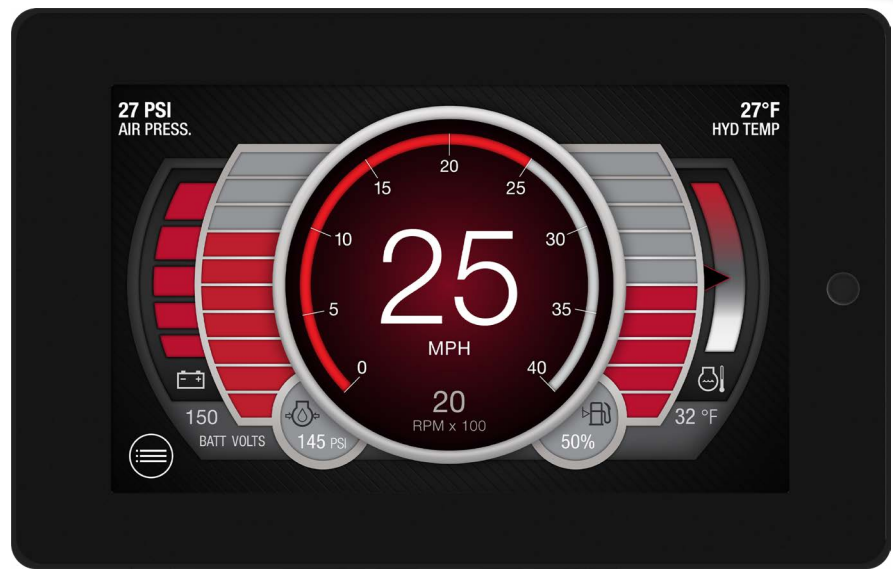


7" Premium Color
Touchscreen Display

All Weather Durability

Industry Leading Sunlight
Readability



NOT ACTUAL DISPLAY, FOR REFERENCE ONLY

THE NEXT GENERATION OF PREMIUM RUGGED DISPLAY CONTROLLERS.

The PV-P70 is the newest display in the PowerView line up. It combines the modern glass-front form factor of a PV-700 with the full I/O complement of the PV-485.

The P70 will be offered in two variants: one with the core technology features expected of a PowerView display: Ruggedness, Sunlight viewability, All-weather durability. The second adds powersports-specific features such as an internal GPS receiver, 2.4GHz Wi-Fi, and 2.5 zone audio out to the core technology set.

INTRODUCING THE POWERVERIEW PRO SERIES

BUILT FOR POWERVERIEW:

PowerVision Configuration Studio® software lets programmers design stunning user interfaces, create intelligent applications with scripting and prototype quickly with a vast library of standard engine parameters.



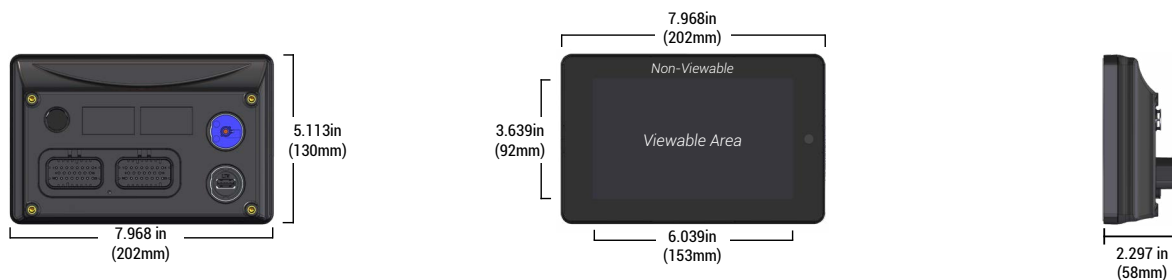
**IP
67**

POWerview® P70

1030723
03-2023

DIMENSIONS

IMAGES DO NOT REFLECT ACTUAL DISPLAY - FOR EXAMPLE ONLY



PRODUCT SPECIFICATIONS

COMPUTING	
PROCESSOR	Renesas® RZ/G1e Arm® Cortex®-A7 dual-core processor @ 1.0 GHz (32-bit)
OPERATING SYSTEM	QNX® Realtime Operating System
STORAGE	8 GB
RAM	512 MB DDR3-SDRAM
GRAPHICS	Integrated Graphics Processor
DISPLAY/HMI	
SCREEN	7-inch, 24bit color
RESOLUTION	800 x 480
CONTRAST RATIO / BRIGHTNESS	600:1, 1000 cd/m ²
TOUCH PANEL	Projected capacitive (PCAP) with glove touch
SURFACE	Anti-glare finish
POLARIZE	Landscape at initial release with universal support coming soon
AMBIENT LIGHT SENSOR	Yes
AUDIO/VIDEO	
DIGITAL VIDEO	(2) Video (NTSC/PAL Single Channel)
AUDIO	2.5 Zone Audio Output (Front, Rear, & Sub) Amp Turn-On (12V, 500mA Output)

INTERFACES	
CAN	(2)CAN 2.0B according to ISO 11898-2, J1939 & proprietary messaging
USB	(2) USB 2.0B full speed host - 1 on bulkhead type A & 1 in main connector
WIFI	2.4Ghz
BLUETOOTH	2 Modules
INPUTS	(4) Digital (discrete digital, active-high) (4) Analog (0-5VDC, 4-20mA) (1) Frequency (0-5 VDC)
OUTPUTS	(2) Digital (1-10A, 1-500mA) (4) 500 mA switched low-side (1) Frequency (2Hz-10kHz)
ELECTRICAL/ENVIRONMENTAL	
OPERATING VOLTAGE	6 - 36 VDC, reverse polarity protected
OPERATING TEMPERATURE	-30°C to +80°C
PROTECTION	IP67 & IP69K, SAE/Enovation 1000hr QUV
VIBRATION	7.86 Grms (5-2000Hz), 3 axes
SHOCK	±50G in 3 axes
EMC/EMI	ISO 13766

⚠ WARNING: This product can expose you to chemicals including lead, which is known to the State of California to cause cancer. For more information, go to www.P65Warnings.ca.gov.

FOR MODEL & PART INFORMATION

ENOVATIONCONTROLS.COM

FOR MANUAL & SUPPORT DOCUMENTS

SUPPORT.ENOVATIONCONTROLS.COM

FOR SUPPORT & WARRANTY

ENOVATIONCONTROLS.COM/SUPPORT

SALES CONTACT



CONTACT

✉ sales@novationcontrols.com

☎ +1 918.317.4100

www.novationcontrols.com

CORPORATE HEADQUARTERS

5311 S 122nd E Ave
Tulsa, Oklahoma, USA 74146

United States • United Kingdom • India • China



FM 28221 (Tulsa, OK-USA)
FM 29422 (UK)