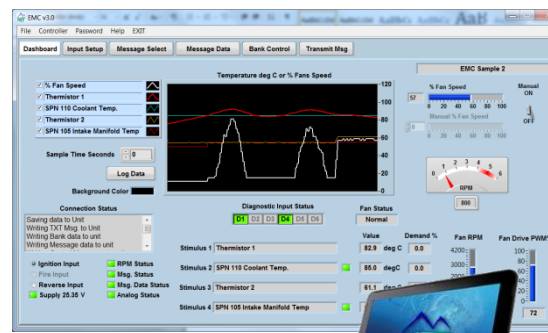


EMC - SINGLE E-FAN BANK CONTROLLER

- HCT encapsulated block, flameproof: designed for harsh environments
- **SAE J1455 Compliant** load dump protection
- **9-32VDC power supply** (200mA max load current consumption)
- **Single fan bank output** (multiple fans if connected in parallel)
- **1x 0-100% PWM output** (sourcing or sinking, Max 500mA, short circuit protection)
- **1x 500mA On/Off output** for reverse or alarm indicators
- **On-Demand** (open-loop) or **Set-Point** (closed-loop) control
- **-40 to +85°C operational**, -60 to +150°C storage
- **NEMA 6P/IP67**
- **CE, E-Mark** *check for availability*

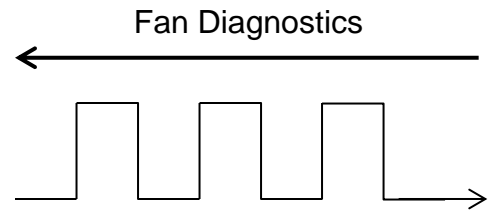
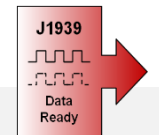


GRAPHICAL USER INTERFACE (GUI)

- Simple and easy to use for system **configuration**, **monitoring**, and **data-logging**
- Free download from HCT website
- Communication via Mini USB A/B
- **PID Set Point** or **On-Demand** configurable
- Setup fan profile and operational logic
- Configure received and transmitted SAE J1939 messages
- **Manual override** for setup and troubleshooting
- Equipped with **standard application data profiles** for quick setup
- **Pre-configured thermistor profiles** for accurate temperature readings.
- **Save and load** customized application profiles
- **OEM password protected**

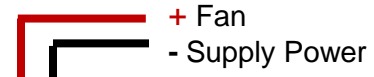
J1939 COMMUNICATION

- Select or configure up to **6x SAE J1939 CAN Bus values** as inputs
- CAN data rate 250Kbps, 500Kbps or 1 Mbps
- Transmit standard and custom messages as float or integers including:
 - Temperature
 - % Duty cycle demand
 - Fan RPM
 - Diagnostic status
 - Engine RPM
 - Supply voltage
 - CAN received messages



DIAGNOSTICS

- Up to **6x fan diagnostic** inputs



SMART E-FAN

- Compatible with +12Vdc or +24Vdc brushless variable speed electric fans
- **Reverse** capability for 'Purge' or 'De-Ice'
- **Sourcing & Sinking**
- **Invert duty cycle**
- Customizable for all e-Fan profiles
- PWM frequency software adjustable **33-1000Hz**
- Powered separately from controller



SWITCH INPUTS

- Up to **3x switch** inputs
 - Ignition
 - Fire
 - Reverse



SENSOR INPUTS

- Up to **2x sensor** inputs
 - Thermistor
 - Potentiometer (0-5v)