

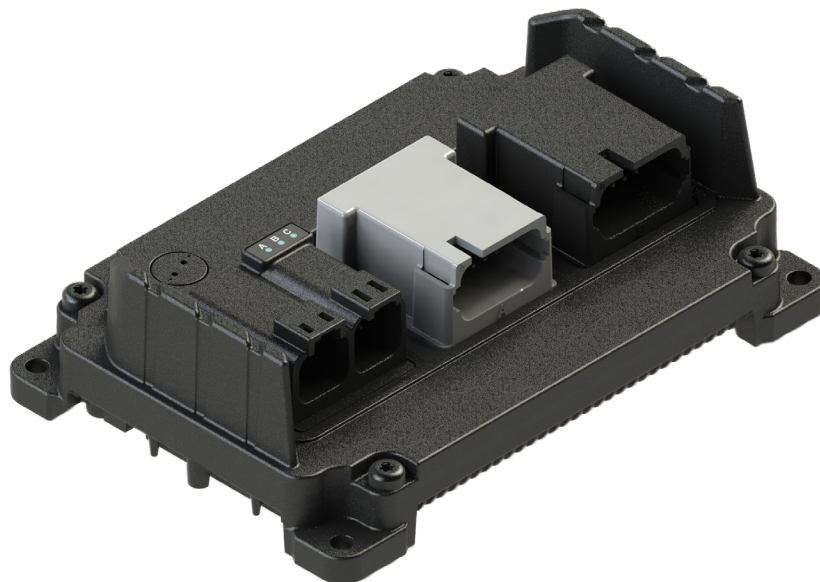
Built to Perform in High Heat
and High Vibration Areas

Easy to Scale Up or Down
Within the Hardware Family

Features Universal Inputs and
Flexible Proportional Outputs

Open/Short Circuit Protection
and Overcurrent Protection

Integrate Quickly with ACE
or Program with CODESYS



FLEXIBLE CONTROLLER FOR HARDWORKING EQUIPMENT

Part of the complete series of scalable uControl mobile controllers, the MC3-21-10 offers flexible I/O options for a variety of equipment needs and applications. Featuring multiple CAN interfaces, extensive inputs and software selectable outputs, MC3-21-10 controllers deliver extreme durability with precision control for any job.

Simplify your equipment control using reliable, software selectable, universal outputs with feedback. The MC3-21-10 controller works great with extended low voltage operation and also provides short circuit and overload protection. MC3-21-10 controllers feature a rugged IP69K-sealed aluminum enclosure with gel potting that allows it to

be mounted where you need it, including high-heat and high-vibration areas like in engine compartments or on attachments.

FLEXIBLE PROGRAMMING OPTIONS



Powered by Enovation Controls

Intuitive drag-and-drop
controller development
environment designed for
speed and ease-of-use.



CODESYS

Advanced programming
environment with support
for structured text, ladder
logic, and block diagrams.

**IP
69K**



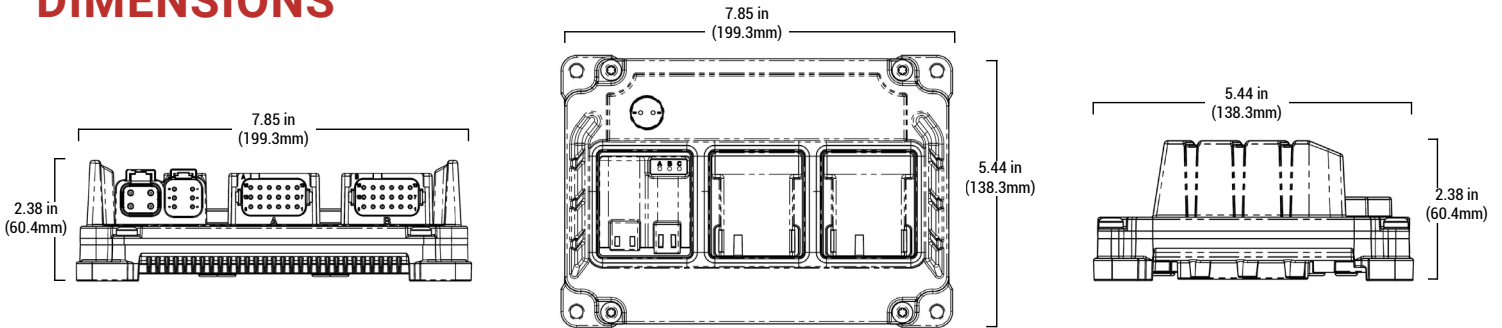
**e-Mark ISO-13766
REACH / RoHS**

ENOVATIONCONTROLS.COM/MC3-21-10

uControl™ MC3-21-10

2010001
03-2022

DIMENSIONS



PRODUCT SPECIFICATIONS

21 INPUTS

UNIVERSAL ANALOG / HIGH FREQUENCY	8
UNIVERSAL ANALOG	13

10 OUTPUTS (SOFTWARE SELECTABLE)

4A PWM (FEEDBACK)	6
DUAL-RANGE PWM 4A / 0.5 A (FEEDBACK)	4

HARDWARE

CAN 2.0B / J1939	3 Channels
SENSOR SUPPLY	(2) 400mA max @ 5 or 10 VDC [Software Selectable Voltage]
CONNECTORS	J1A (4 pin) - DTP06-4S J1B (6 pin) - DT06-6S-E008 J2 (18 pin - A key) - DT16-18SA-K004 J3 (18 pin - B key) - DT16-18SB-K004
LED INDICATORS	(1) Green - Power Status (1) White - Software Configurable (1) Blue - Software Configurable
DIMENSIONS	7.85 x 5.44 x 2.38 in (199.3 x 138.3 x 60.4 mm)

WARNING: This product may expose you to chemicals which are known to the State of California to cause cancer. For more information, go to www.P65Warnings.ca.gov.

POWER SUPPLY

SUPPLY VOLTAGE	6-32 VDC, Nominal Operation @ 12 / 24 VDC
PEAK SUPPLY VOLTAGE	Power supply suppression limits voltage to 55 Volts for duration of Load Dump Event
MAXIMUM CONTINUOUS CURRENT	40 A
IDLE CURRENT 12/24 VDC	< 200mA @ 12VDC < 100mA @ 24VDC
STANDBY CURRENT 12/24 VDC	< 5mA @ 12VDC < 2.5mA @ 24VDC
SLEEP PIN	Control sleep and wake functionality

ENVIRONMENTAL

OPERATING TEMPERATURE	-40° to +221°F (-40° to +105°C)
STORAGE TEMPERATURE	-40° to +257°F (-40° to +125°C)
OPERATING ALTITUDE	0 - 4000 meters
PROTECTION	IP67, IP69K with Protective Boot
VIBRATION	5.82 Grms, 8 hours per axis
SHOCK	±50G, 6ms
HOUSING	Cast aluminum housing, soft-gel potted for extreme ruggedness and durability
EMC/EMI	2014/30/EU (CE / E-MARK), CISPR 11, CISPR 25, EN 60945, EN 61000-4-2, EN 61326-1, SAE J1113-2, SAE J1113-4, SAE J1113-11, SAE J1113-12, SAE J1113-13, SAE J1113-21, SAE J1113-22, SAE J1113-26, SAE J1455

FOR MODEL & PART INFORMATION

FOR MANUAL & SUPPORT DOCUMENTS

FOR SUPPORT & WARRANTY

ENOVATIONCONTROLS.COM/MC3-21-10

SUPPORT.ENOVATIONCONTROLS.COM

ENOVATIONCONTROLS.COM/SUPPORT

SALES CONTACT



CONTACT

✉ sales@novationcontrols.com
☎ +1 918.317.4100
www.novationcontrols.com

CORPORATE HEADQUARTERS

5311 S 122nd E Ave
Tulsa, Oklahoma, USA 74146
United States • United Kingdom • India • China



FM 28221 (Tulsa, OK-USA)
FM 29422 (UK)