

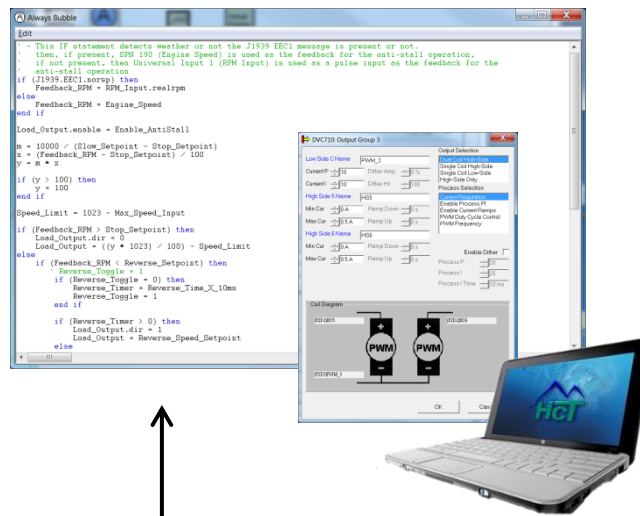
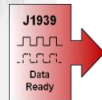
## DVC707 – PROGRAMMABLE CONTROLLER

The DVC707 is a rugged programmable controller capable of operation as a stand alone module or combined with I/O expansion modules for system level solutions. Equipped with configurable inputs and outputs, this controller can be quickly configured for unlimited application requirements. Due to it's solid potted design, this module can be exposed to the most demanding environmental conditions while maintaining consistent and reliable performance.



## CAN Bus COMMUNICATION

The DVC707 is configurable for either J1939, or DVC CAN operation. Communicate with the engine control unit (ECU), HMI Displays, DVC master and expansion modules and additional CAN Bus devices.



- + Controller
- Supply Power (9-32VDC, 250mA Max)



- Output Group 1
- Output Group 2
- 2x Dedicated High-Side Outputs

## INTELLA™ PROGRAMMING SOFTWARE

The patented **Intella™ Software** is the heart of the DVC product line. It was designed to enable customers and channel partners who are relatively unfamiliar with sophisticated electronic control systems to customize HCT's products in the field with minimal training and/or support. The Intella™ Software Suite is a comprehensive development environment for the design, development, testing, modification and support of DVC system applications.

- One-time customer site license fee – NO per seat application charges
- Compatible with all DVC master and expansion modules
- Simulation and diagnostic segments are part of the package
- **OEM password** protected settings
- **Intella™ Training** programs available upon request

## CONFIGURABLE OUTPUT GROUPS

The DVC707 is designed with two configurable output groups and one dedicated High-Side output group for application flexibility. Each configurable output group utilizes two High-Side and one Low-Side PWM in order to configure multiple output types. This equates to a total of **6x High-Side** outputs and **2x PWM** outputs. Each Output Group can be configured in different ways to accommodate 1 to 3 different valves per group.



## CONFIGURABLE SYSTEM INPUTS

- **3x universal inputs**
  - Digital
  - Analog (0 to 20mA, 0 to +5V)
  - Pulse (0 to 8KHz)
- **3x digital inputs**
  - All sinking (configurable system enable)
  - Pulse (up to 25KHz)
- **2x analog inputs**
  - 0 to 5V (10-bit resolution)



### Output Group Configurations

