



# PV101-C Configuration Software V3.1

## Installation and Operations Manual

In order to consistently bring you the highest quality, full featured products, we reserve the right to change our specifications and designs at any time. The latest version of this manual can be found at [www.fwmurphy.com](http://www.fwmurphy.com).

**Warranty** - A limited warranty on materials and workmanship is given with this FW Murphy product.  
A copy of the warranty may be viewed or printed by going to <http://www.fwmurphy.com/warranty>

Please read the following information before installing.

**BEFORE BEGINNING INSTALLATION OF THIS MURPHY PRODUCT:**

- Read and follow all installation instructions.
- Please contact FW MURPHY if you have any questions.

# Table of Contents

<b>Introduction .....</b>	<b>1</b>
<b>Installing V3.1 Software Configurator.....</b>	<b>1</b>
System Requirements.....	1
Installation Instructions.....	1
<b>Getting Started .....</b>	<b>4</b>
Launching the Application .....	4
PV101-C Configurator Screen.....	5
Navigating the Configurator Screen .....	5
Entering a New Configuration File.....	7
<b>Create and Load Config Files .....</b>	<b>9</b>
Connecting Your PV101-C to Your Computer.....	9
Installation .....	10
<b>Screen and Field Definitions.....</b>	<b>13</b>
Field Sorting.....	13
Configuration.....	14
General Settings .....	15
Parameters.....	17
Measured Value Parameter Configuration.....	19
State Parameter Configuration .....	21
Gear Parameter Configuration.....	22
Engine Configuration.....	23
DTCs.....	24
Modbus Gages.....	25
Screen.....	26
Reminders.....	27
DPF .....	28
<b>Text Editor.....</b>	<b>29</b>
<b>Image Editor .....</b>	<b>30</b>
<b>Reports.....</b>	<b>32</b>

**THIS PAGE INTENTIONALLY LEFT BLANK**

## Introduction

PV101-C V3.1 Configuration Software is a PC-based configuration software for the PV101-C display. The easy-to-use interface enables you to modify features of the PV101-C including:

- Engine configuration
- Parameters
- Modbus gauges
- DTC
- Reminders
- DPF

File transfer utilities for configuration upgrades are provided so that once the configuration is set, it may be downloaded from your PC to the PV101-C via a serial or USB connection.

## Installing V3.1 Software Configurator

### System Requirements

---

A USB 1.1 connection is required for transferring the configuration from PC to the PV101-C.

While the configuration software will function on any PC or laptop running Windows, it will not perform transfers using the USB driver unless the operating system supports USB. USB supported operating systems include Win98SE, NT, and XP.

Serial transfers using standard communication ports (COM1, COM2) should be possible on all Windows platforms.

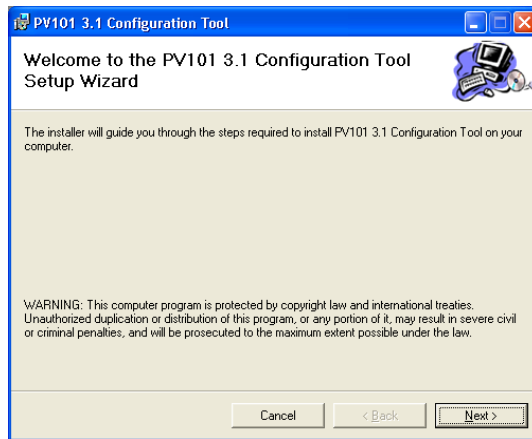
The configuration software and USB driver provide efficient use of your hard drive, using only 3-5 MB of disk space after installation.

### Installation Instructions

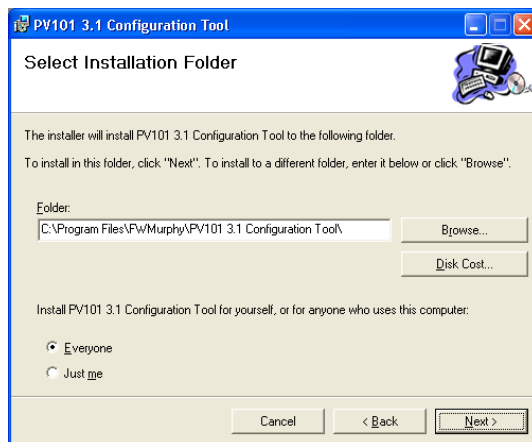
---

Follow the steps below to install the configuration software on a PC or laptop.

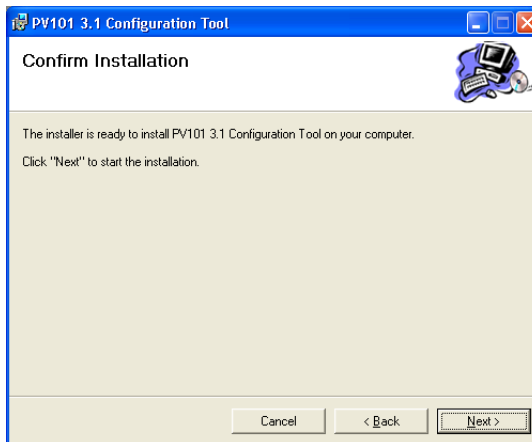
1. Insert the PV101-C V3.1 CD into the CD drive of your computer. When the installation menu is displayed, select "Install V3.1 Configuration Tool" from the menu. An Installation Wizard is launched. Click on [Next] to continue.



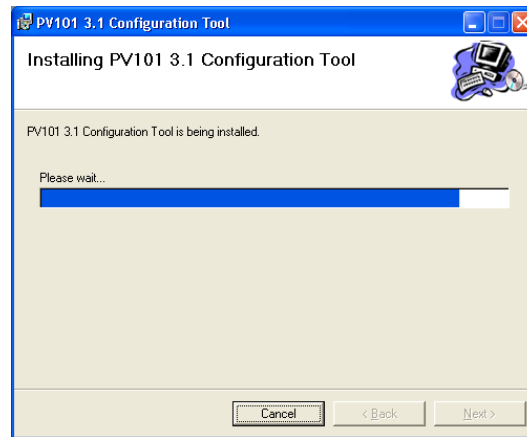
2. You will be asked for a destination folder for the program. You can accept the suggested directory or select a different directory by clicking the [Change] button and browse to the destination folder. Once the destination folder is determined, click [Next] to continue.



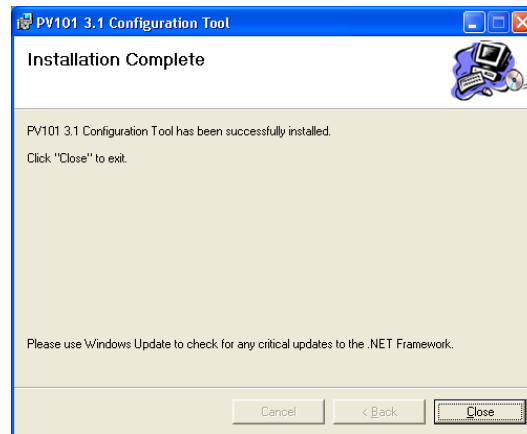
3. The Wizard is now ready to install the program. Click [Next] to begin. This may take several minutes.



4. The following screen is displayed while the configuration tool is being installed.



5. When the installation is complete, click [Close].



## Getting Started

This section provides instructions for launching the application, identifies application features and defines general navigation.

### Launching the Application

---

To access the application, select “PV101-C 3.1 Configuration Tool” from the list of programs under your “Start” menu. The first time you launch the application, you will be asked for a key.



Contact Sales at FW Murphy, at 918-317-4100, or email [sales@fwmurphy.com](mailto:sales@fwmurphy.com) to obtain the product key and press 1 for inside sales. Be prepared to provide the following information:

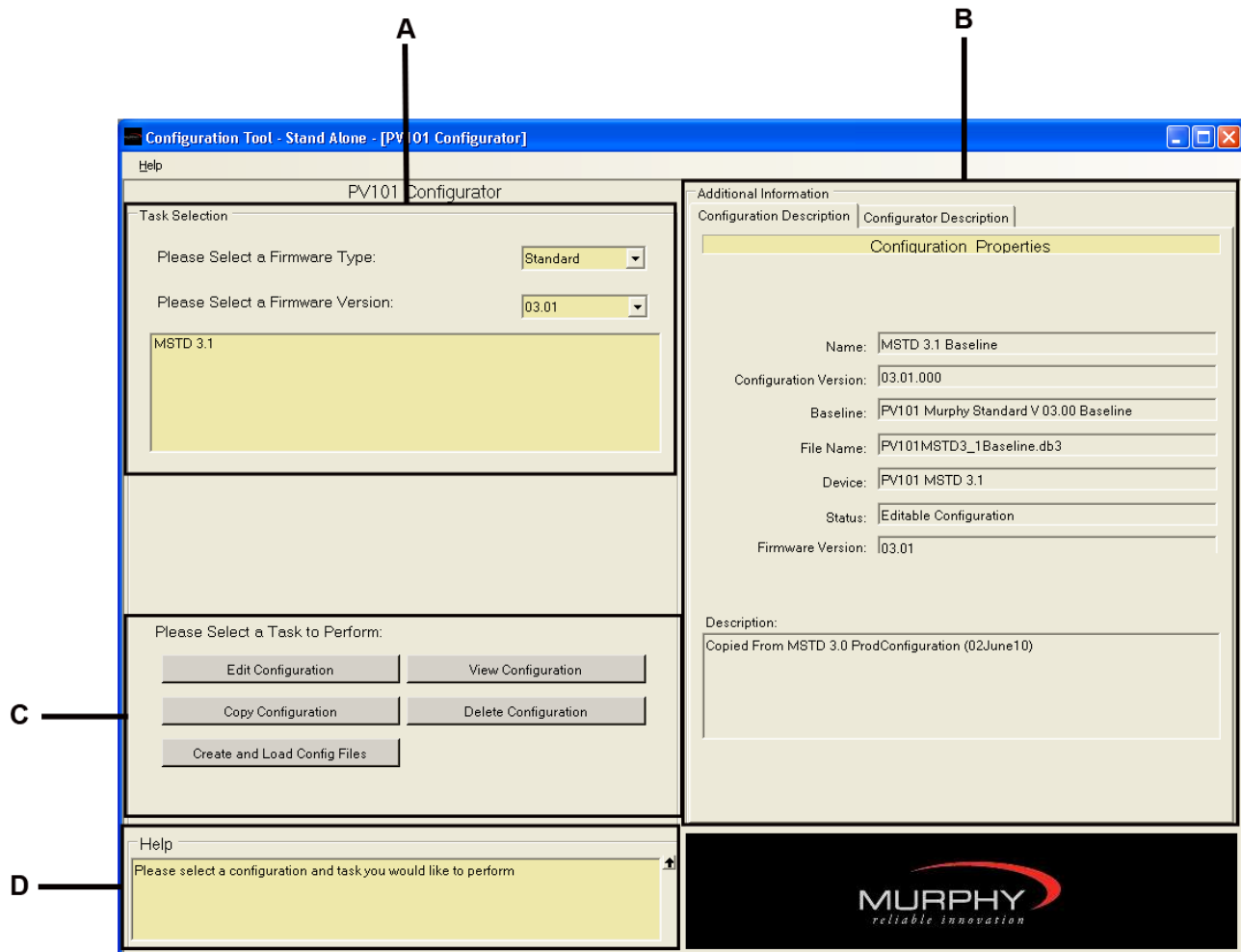
- Company Name
- Main Contact Name
- Phone Number
- Email Address

Enter the key provided and press [OK] to continue.



## PV101-C Configurator Screen

Once your software is installed and you have entered your key ID as shown in the previous section, the following screen is displayed. You are now ready to use the software. From this default screen, you can manage (view, edit, copy, delete or create and load) the configurations that have been set up for your PV101-C. To get you started, a read-only configuration (MSTD 3.1) is provided. It is recommended that you begin by performing a copy of this database and naming it something unique and meaningful to you. The original database can be stored as the baseline to use at another time.



### Navigating the Configurator Screen

**Section A:** The ‘**Task Selection**’ portion at the top left of screen facilitates configuration file management. In this section, you will find a list of your configurations. Notice the existing configuration called MSTD 3.1. You can double click on this configuration to view it. You can also copy it and edit other configurations that you have created.

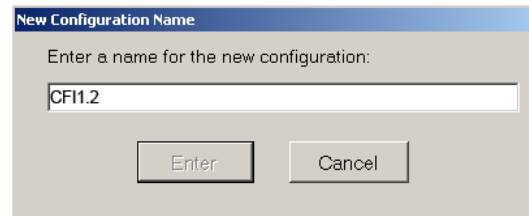
**Section B:** The ‘**Additional Information**’ on the right side of the screen provides two tabs that specify properties of the configuration file. The right side of the screen cannot be edited.

**Section C:** The '**Select a Task to Perform**' provides **Edit, View, Copy,** and **Delete** buttons for file management. Once you have a completed the configuration file, the **Create and Load Config Files** button is used to download the new configuration to the PV101-C display unit.

**Section D:** The '**Help**' at the bottom left provides instructions for the current screen or occupied field. This context sensitive help box is located in the lower left corner of all screens where field help is available. The **Help** at the top left launches a PDF version of this document.

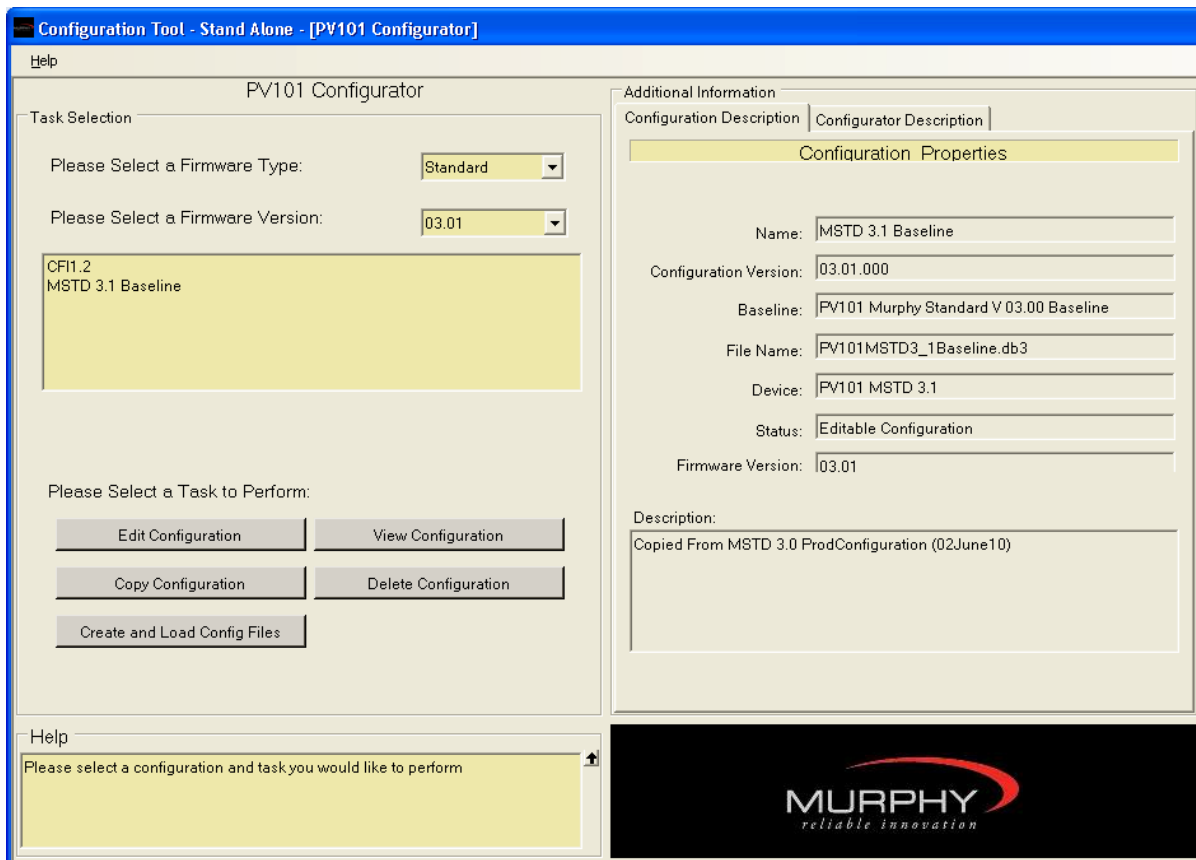
## Entering a New Configuration File

To enter or modify a new configuration file, click and highlight **MSTD 3.1**. You can select the default configuration or another configuration if there are others available. Then click **[Copy Configuration]**. Enter a file name and click **[Enter]**. You will be asked to enter a name for the new configuration.



A dialog box titled "New Configuration Name" with a light blue header. The main area is light gray and contains the text "Enter a name for the new configuration:" above a text input field containing "CFI1.2". Below the input field are two buttons: "Enter" and "Cancel".

The new configuration file is now listed under MSTD 3.1 and Baseline has been added to MSTD 3.1 configuration file name. Baseline files cannot be edited.

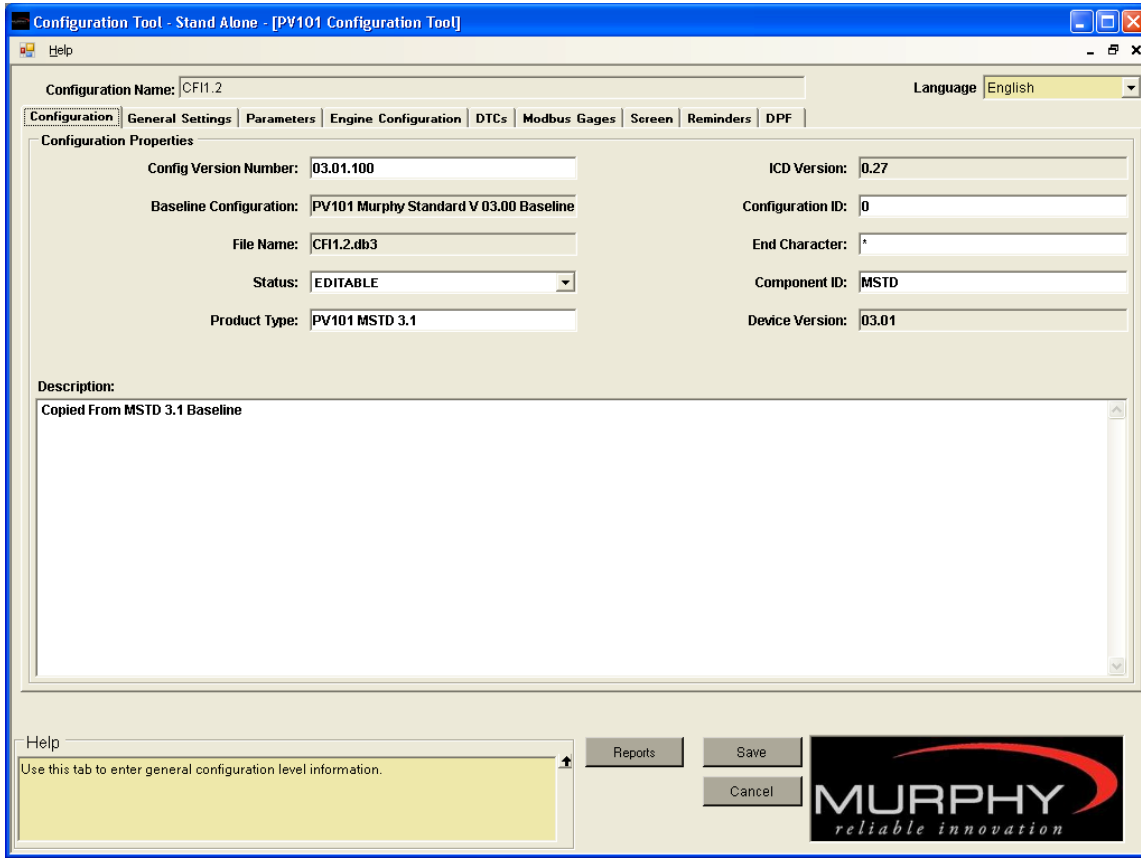


The main window of the "Configuration Tool - Stand Alone - [PV101 Configurator]". The title bar is blue. The window is divided into several sections:

- Task Selection:** Includes dropdowns for "Please Select a Firmware Type:" (Standard) and "Please Select a Firmware Version:" (03.01). A list box shows "CFI1.2" and "MSTD 3.1 Baseline". Below are buttons for "Edit Configuration", "View Configuration", "Copy Configuration", "Delete Configuration", and "Create and Load Config Files".
- Additional Information:** A tabbed area with "Configuration Description" and "Configurator Description" tabs. The "Configuration Properties" section shows fields for Name (MSTD 3.1 Baseline), Configuration Version (03.01.000), Baseline (PV101 Murphy Standard V 03.00 Baseline), File Name (PV101MSTD3\_1Baseline.db3), Device (PV101 MSTD 3.1), Status (Editable Configuration), and Firmware Version (03.01). A Description field contains "Copied From MSTD 3.0 ProdConfiguration (02June10)".
- Help:** A section at the bottom left with a text area containing "Please select a configuration and task you would like to perform".
- Logo:** The "MURPHY reliable innovation" logo is in the bottom right corner.

Click and highlight the new configuration name, then click **[Edit Configuration]**.

Your new configuration file is displayed.



You are now ready to update your configuration. Navigating and making selections is easily accomplished through the use of tabs and drop down menus.

**NOTE:** The **Help** box located at the bottom left. It will provide field definitions and help guide you through what is needed, depending upon what screen or field you are on.

Click **[Save]** once your changes have been made or click **[Cancel]** to return to the 'PV101-C Configurator' screen without saving changes.

Refer to '**Screen and Field Definitions**' for detailed information on field definitions for each tab in the configuration file. This can be a useful reference when setting up your configuration.

## Create and Load Config Files

When you are ready to download a configuration, click and highlight one of the configuration files in the list, then click **[Create and Load Config Files]**. The PV101-C Loader screen is displayed. In order to download a Configuration File, you must have your device connected to the PV101-C and the computer you're working on.

## Connecting Your PV101-C to Your Computer

What you will need to connect your device to a computer:

<p>USB to RS485 Converter</p> 	<p>USB Cable</p> 
<p>Programming Cable</p> 	<p>PV101-C</p> 
<p>PC</p> 	<p>Power Supply</p> 

## Installation

---

If you will be using a USB connection device to download the configuration into the PowerView 101 (PV101-C), you will need to install the USB driver. Follow the instructions listed below to install the USB Driver.

- Connect the USB cable to the USB to RS485 converter.

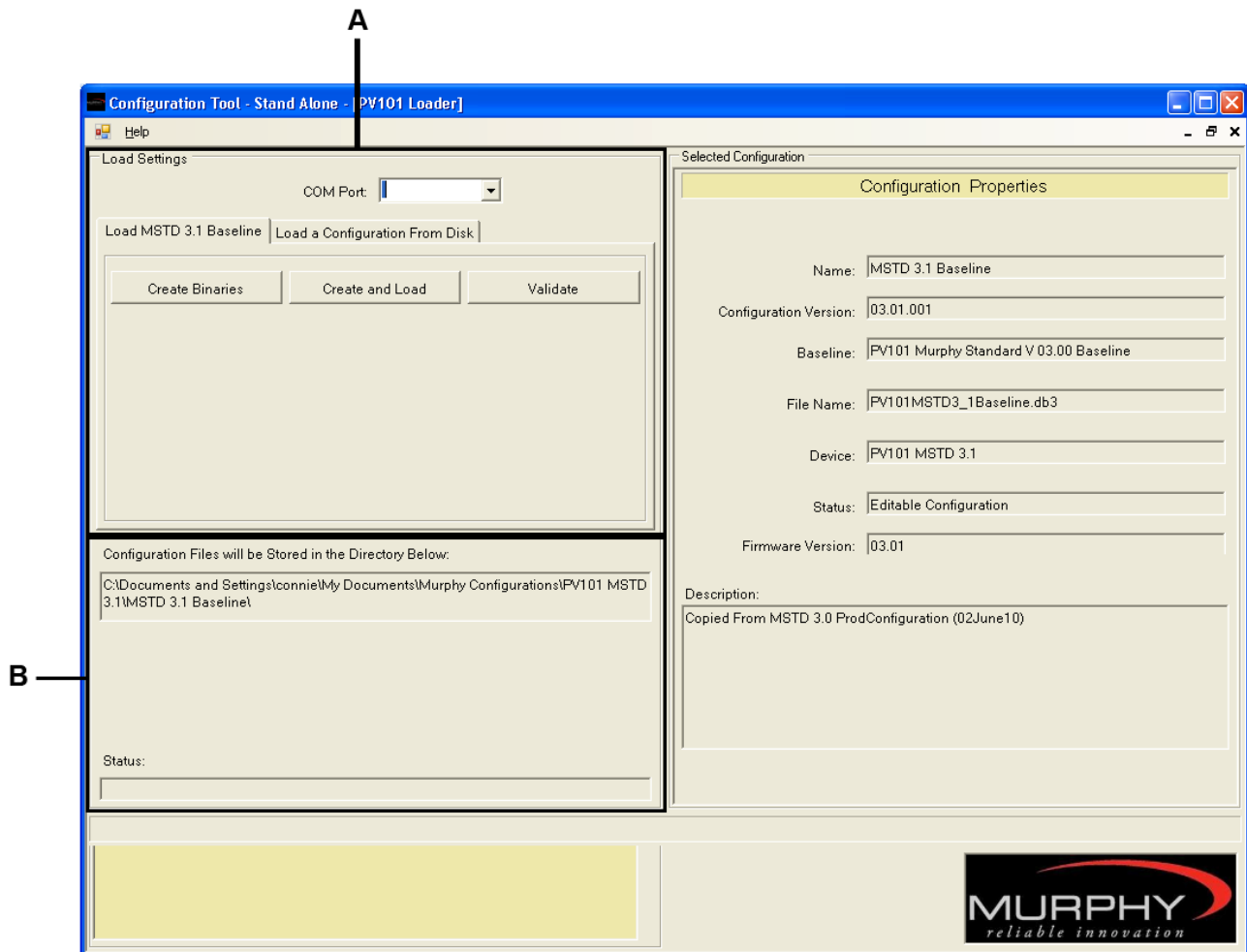


- . Connect the opposite end of the USB cable to the PC and continue as shown below.

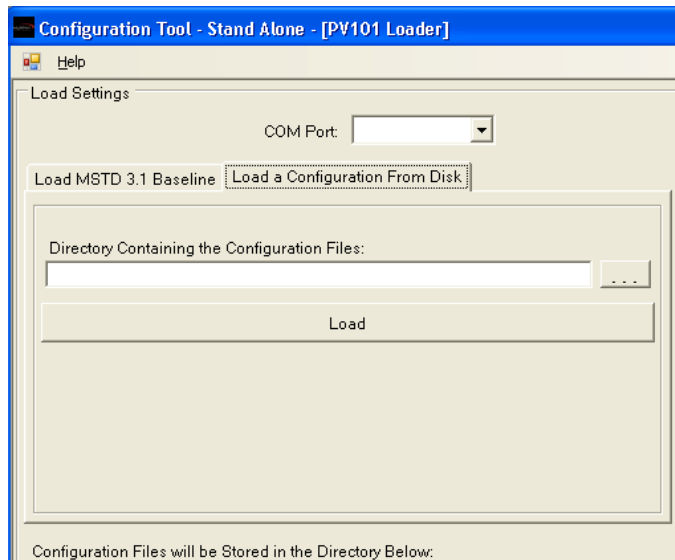


1. .Insert the 6-PIN connector into Port B in the back of the PV101-C.
2. Connect the programming cable to the RS485 converter.
3. Connect the power source cable to the programming cable.

You are now ready to load data onto the PV101-C.



**Section A:** This section contains the information needed to create and load a binary configuration into the PV101-C-C. Select the COM port to which the device is connected. Under the Load [selected configuration name] tab, you can Create Binary files that will be stored on your PC, Create and Load the binary files to the connected PV101-C device and Validate that the configuration loaded correctly. You can also load configuration files previously stored on your computer by selecting the “**Load a Configuration from Disk**” tab. The following tab is displayed, allowing you to browse to the file location. Once the file is located, click [**Load**].



**Section B:** This section displays the file location for the binary files generated by the program and the status of the load to the device.

If you have previously generated a binary file, you can load that file directly from its file location on your PC. Click [...] to browse your computer and locate the file. Then click [Load]. This is a way to expedite loading the device with the desired configuration.



## Screen and Field Definitions

This section provides field definitions for each tab in the configuration file and can be used as a reference when setting up your configuration files. An example of each tab will be displayed, followed by a table listing choices for any selectable fields with drop-down menus. For all other fields, place the cursor in the field and view the **Help** box in the bottom left corner for additional information.

The following fields are available on every tab.

Field	Description
<b>Configuration Name</b>	The name assigned when you copied the new configuration file.
<b>Language</b>	Default choices*: <ul style="list-style-type: none"><li>• <b>English</b></li><li>• <b>French</b></li><li>• <b>German</b></li><li>• <b>Spanish</b></li><li>• <b>Italian</b></li></ul> *See the General Settings tab for more information about language setup.
<b>Help</b>	Provides context help based on tab and field occupied.
<b>Reports</b>	Launches a window for determining report specifications.
<b>Save</b>	Saves any changes made to the current configuration file.
<b>Cancel</b>	Displays a dialog box asking if you want to save changes before exiting.

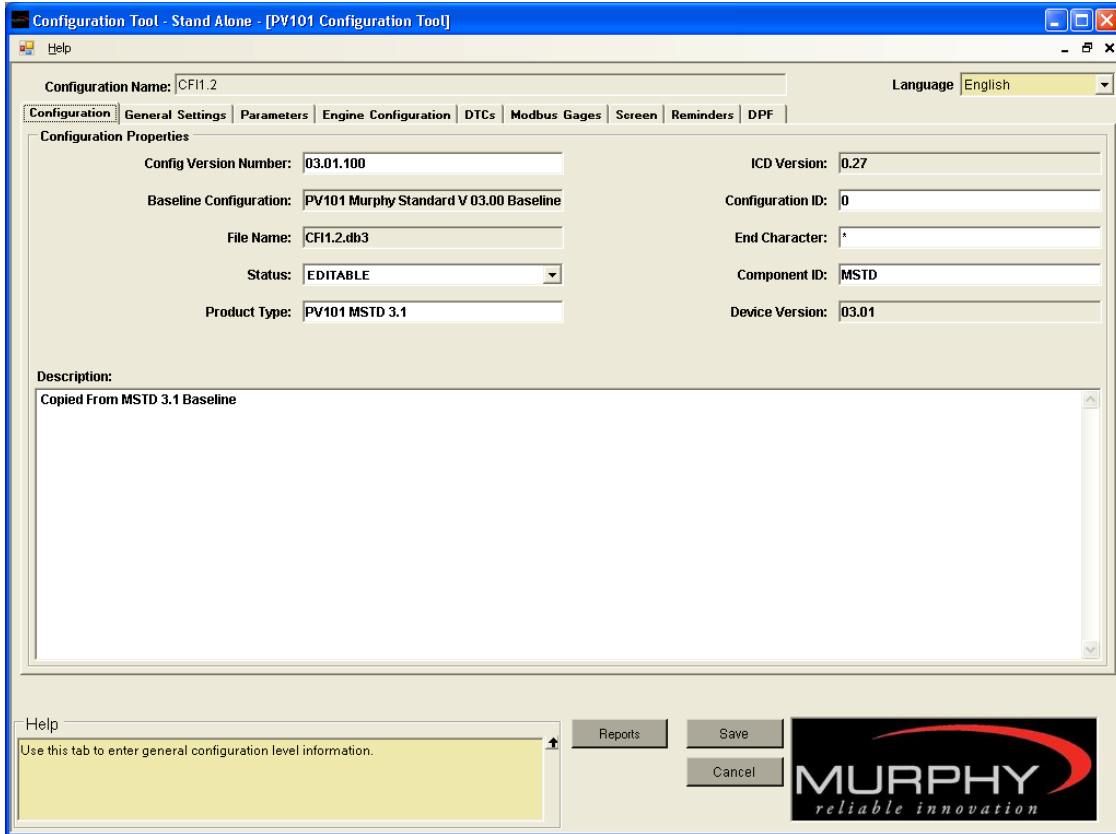
## Field Sorting

Tables containing data fields are provided on the following tabs:

- Parameters
- Engine Configuration
- DTCs
- Modbus Gages
- DPF

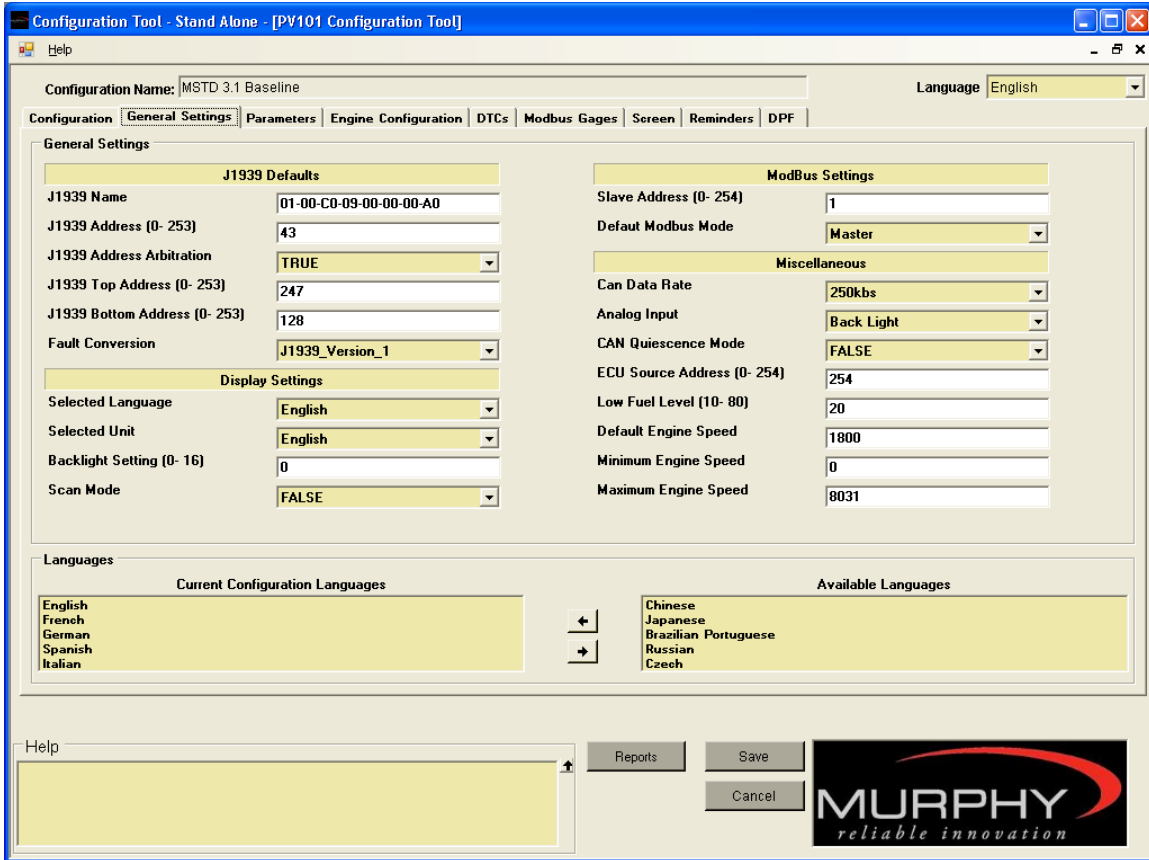
You can sort and view this data a number of ways by clicking the table headings. Each heading will display the data sorted by ascending or descending order, and may be grouped by configuration options.

# Configuration



Field	Description
Status	Available choices: <ul style="list-style-type: none"> <li>• <b>Editable</b> – able to edit</li> <li>• <b>Locked</b> – unable to edit</li> <li>• <b>INQA</b> – For Murphy Use only</li> </ul>
For all other fields	Place the cursor in the field and view the <b>Help</b> box in the bottom left corner for additional information.

# General Settings



This tab allows you to configure the general settings of your device. All fields on this form are editable with the following exceptions:

- Configuration Name
- Help

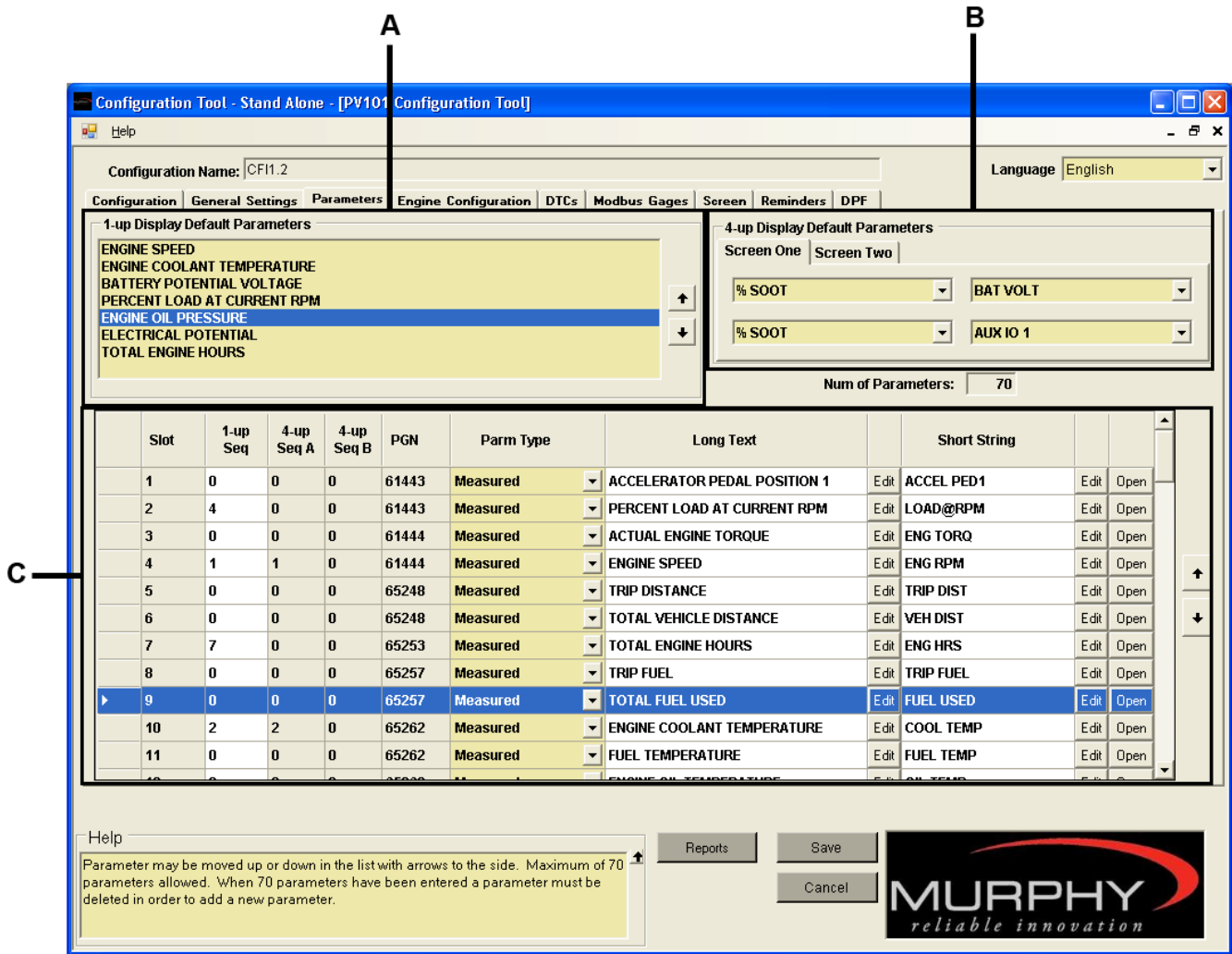
The drop-down lists are shaded yellow while the fields that you can edit directly are white. If a range is provided, enter a value within that range. If you enter a value outside the range, you will get an error message.

**Language Setup:** You can customize the Language drop-down list by selecting languages in the 'Available Languages' box and clicking the [Left Arrow] to move them to the 'Current Configuration Languages' box. You can select up to five languages to be displayed in the list except as shown in the note below. There are currently five languages selected as a default. If you want a language other than those in the default list, you must remove one or more from the 'Current Configuration Languages' box by selecting it and clicking the [Right Arrow] before you can add a new language.

NOTE: When you select Chinese or Japanese, the only other language that can be selected is English. Before attempting to add Chinese or Japanese, remove all other languages except English (at a minimum) from the 'Current Configuration Language' box prior to selecting Chinese or Japanese.

<b>Field</b>	<b>Description</b>
<b>J1939 Address Arbitration</b>	Available choices: <ul style="list-style-type: none"> <li>• <b>True</b></li> <li>• <b>False</b></li> </ul>
<b>Fault Conversion</b>	Available choices: <ul style="list-style-type: none"> <li>• <b>J1939_Verson_1</b></li> <li>• <b>J1939_Version_2</b></li> <li>• <b>J1939_Version_3</b></li> </ul>
<b>Selected Language</b>	Default choices*: <ul style="list-style-type: none"> <li>• <b>English</b></li> <li>• <b>French</b></li> <li>• <b>German</b></li> <li>• <b>Italian</b></li> <li>• <b>Spanish</b></li> </ul> <p>*See Language Setup above for information on how to specify the languages contained in this list.</p>
<b>Selected Unit</b>	Available choices: <ul style="list-style-type: none"> <li>• <b>English</b></li> <li>• <b>Metric Bar</b></li> <li>• <b>Metric KPA</b></li> </ul>
<b>Scan Mode</b>	Available choices: <ul style="list-style-type: none"> <li>• <b>True</b></li> <li>• <b>False</b></li> </ul>
<b>Default Modbus Mode</b>	Available choices: <ul style="list-style-type: none"> <li>• <b>Master</b></li> <li>• <b>Slave</b></li> </ul>
<b>Can Data Rate</b>	Available choices: <ul style="list-style-type: none"> <li>• <b>100kbs</b></li> <li>• <b>125kbs</b></li> <li>• <b>1MBps</b></li> <li>• <b>250kbs</b></li> <li>• <b>500kbs</b></li> <li>• <b>800kbs</b></li> </ul>
<b>Analog Input</b>	Available choices: <ul style="list-style-type: none"> <li>• <b>Back Light</b></li> <li>• <b>Fuel Level</b></li> </ul>
<b>CAN Quiescence Mode</b>	Available choices: <ul style="list-style-type: none"> <li>• <b>True</b></li> <li>• <b>False</b></li> </ul>
For all other fields	Place the cursor in the field and view the <b>Help</b> box in the bottom left corner for additional information.

# Parameters



On this screen you can specify the parameters to display on the device screens.

- Section A:** This section provides an area to specify what parameters are displayed on the device 1-up list. You can display as few as 1 up to 70 parameters in this list. You can select the parameters from the parameter list in Section C and drag up to this section and drop it in. You can adjust the order of this section by either selecting the parameter you want to move and click the arrow up or down on the right or you can drag the parameter to the preferred position in the list.

**NOTE:** Only the first fifty 16 bit parameters marked for the Modbus Register will be registered. If a parameter exceeds 16 bits, it will be counted as two.

- Section B:** This section provides an area to specify two 4-up display screens on your device. Each tab represents a display. Simply select the parameters to display from the drop-down lists under each tab.

- **Section C:** This section contains the parameters with you can work. You can select the parameter type, edit the Long Text (name) or the Short String (nick name). The strings will appear on the device as they are entered here once you download the configuration. In addition, you can open the parameter to modify certain elements of the parameter using the Measured Value Parameter Configuration screen shown below. As with Section A, you can change the order of the parameters contained in Section C by selecting the parameter and using the up or down arrows to move it to the desired location in the list.

Field	Description
<b>1-Up Display Default Parameters</b>	You can select from all available parameters. All parameters that are listed under the Parameters tab are available to you for display. There up to 70 parameters from which to make your selections. You could display all 70 in this list if you chose to do so.
<b>4-Up Display Default Parameters</b>	Each drop-down menu for both <b>Screen One</b> and <b>Screen Two</b> contain all the parameters listed under the parameters tab. There are up to 70 parameters from which to make your selection.
<b>Parm Type</b>	Available choices: <ul style="list-style-type: none"> <li>• <b>Measured</b></li> <li>• <b>State</b></li> <li>• <b>Gear</b></li> </ul>
<b>Long Text</b>	Click <b>[Edit]</b> to launch the Text Editor in order to make changes. Refer to ' <b>Text Editor</b> ' for additional information on the Text Editor.
<b>Short String</b>	Click <b>[Edit]</b> to launch the Text Editor in order to make changes. Refer to ' <b>Text Editor</b> ' for additional information on the Text Editor.
<b>Open</b>	Click <b>[Open]</b> to launch the 'Measured Value Parameter Configuration' window that displays all the values assigned to a particular Slot#. All parameters may be edited except the Slot # field. Refer to ' <b>Measured Value Parameter Configuration</b> ' for additional information.
For all other fields	Place the cursor in the field and view the <b>Help</b> box in the bottom left corner for additional information.

## Measured Value Parameter Configuration

This screen displays all the values assigned to a particular Slot#. All values can be edited, with the exception of **Slot #**.

The screenshot shows the 'Measured Value Parameter Configuration' window. It includes a top bar with a blue gradient. Below the bar, the interface is divided into several sections. On the left, there are input fields for 'Slot #', 'PON', 'Starting Byte', 'Starting Bit', 'Bit Length', 'Long Text', 'Short Text', 'Data Range Low', 'Data Range High', 'Repetition Rate', and 'Modbus Gauge Precision'. Each field has a corresponding 'Edit' button. On the right, there is a 'Language' dropdown menu and a 'Configuration Flags' section with checkboxes for 'Data Smoothing Enabled', 'Data Page (NMEA 2000)', 'Modbus Register', and 'Show Bar Graph'. Below these is a 'Special Processing' dropdown menu. At the bottom, there is a table with columns for 'Unit', 'Unit Description Text', 'Precision', 'Resolution', 'Offset', 'Bar Graph Min', and 'Bar Graph Max'. The table contains three rows: 'English', 'Metric Bar', and 'Metric KPA'. At the bottom right, there are 'OK' and 'Cancel' buttons and the 'MURPHY reliable innovation' logo.

Unit	Unit Description Text	Precision	Resolution	Offset	Bar Graph Min	Bar Graph Max
English	%	Edit 0	1.0	125	0	125
Metric Bar	%	Edit 0	1.0	125	0	125
Metric KPA	%	Edit 0	1.0	125	0	125

**Section A:** In this section you can view and edit the details for the parameter. You can customize the standard values. You can rename the parameter if you like (see note) both the long and the short text. Each editable field has context sensitive help available in the lower left corner of the page.

**NOTE:** If you change the long or short text, the translations provided might not be valid, in which case you will need to provide your own translations if they are desired.

**Section B:** In this section, you can enable or disable the configuration flags.

**NOTE:** Only the first fifty 16 bit parameters marked for the Modbus Register will be registered. If a parameter exceeds 16 bits, it will be counted as two.

**Section C:** In this section, you can view or edit the way in which the parameter is represented. In addition, you can define the graph details.

NOTE: For fields with an [Edit] button, you can click **[Edit]** to launch the Text Editor in order to make changes. Refer to '**Text Editor**' for additional information.



## State Parameter Configuration

This screen displays all the values assigned to a particular Slot#. All values can be edited, with the exception of **Slot #**.

State Slot Value	State Fault Value
0	223
224	224
225	225
226	226
227	227
228	228
229	229
230	230
231	231
232	232
233	233
234	234

**Section A:** In this section you can view and edit the details for the parameter. You can customize the standard values. You can rename the parameter if you like (see note) both the long and the short text. Each editable field has context sensitive help available in the lower left corner of the page.

**NOTE:** If you change the long or short text, the translations provided might not be valid, in which case you will need to provide your own translations if they are desired.

**Section B:** In this section, you can enable or disable the configuration flags.

**NOTE:** Only the first fifty 16 bit parameters marked for the Modbus Register will be registered. If a parameter exceeds 16 bits, it will be counted as two.

**Section C:** In this section, you can view or edit the way in which the parameter is represented. In addition, you can define the graph details.

**NOTE:** For fields with an [Edit] button, you can click **[Edit]** to launch the Text Editor in order to make changes. Refer to 'Text Editor' for additional information.

## Gear Parameter Configuration

This screen displays all the values assigned to a particular Slot#. All values can be edited, with the exception of **Slot #**.

The screenshot shows the 'Gear Parameter Configuration' window. It is divided into three main sections labeled A, B, and C. Section A (top left) contains fields for Slot # (37), PON (51445), Starting Byte (1), Starting Bit (1), Bit Length (8), Long Text (SELECTED GEAR), Short Text (SELECT GEAR), Data Range Low (0), Data Range High (251), and Repetition Rate (100). Section B (top right) contains a Language dropdown (English) and Configuration Flags: Data Smoothing Enabled (unchecked), Data Page (HME.A.2000) (unchecked), and Modbus Register (checked). Section C (middle) contains gear text fields: Neutral Gear Text (NEUTRAL), Forward Gear Text (FWD), Reverse Gear Text (REV), and Park Gear Text (PARK), each with an Edit button. At the bottom right are Ok and Cancel buttons and the MURPHY logo with the tagline 'reliable innovation'.

**Section A:** In this section you can view and edit the details for the parameter. You can customize the standard values. You can rename the parameter if you like (see note) both the long and the short text. Each editable field has context sensitive help available in the lower left corner of the page.

**NOTE:** If you change the long or short text, the translations provided might not be valid, in which case you will need to provide your own translations if they are desired.

**Section B:** In this section, you can enable or disable the configuration flags.

**NOTE:** Only the first fifty 16 bit parameters marked for the Modbus Register will be registered. If a parameter exceeds 16 bits, it will be counted as two.

**Section C:** In this section, you can view or edit the way in which the parameter is represented. In addition, you can define the graph details.

**NOTE:** For fields with an [Edit] button, you can click **[Edit]** to launch the Text Editor in order to make changes. Refer to '**Text Editor**' for additional information.

# Engine Configuration

Configuration Tool - Stand Alone - [PV101 Configuration Tool]

Configuration Name: CF11.2 Language: English


Configuration | General Settings | Parameters | **Engine Configuration** | DTCs | Modbus Gages | Screen | Reminders | DPF

PGN: 65251

	Start Byte	Start Bit	Len	Unit Label		Parameter Description		Precision	Data Range Low	Data Range High	Unit Resolution	Unit Offset
	0	0	16	RPM	Edit	ENGINE SPEED PT 1	Edit	0	0	64255	0.125	0
	2	0	8	%	Edit	PERCENT TORQUE 1	Edit	0	0	250	1	125
	3	0	16	RPM	Edit	ENGINE SPEED PT 2	Edit	0	0	64255	0.125	0
	5	0	8	%	Edit	PERCENT TORQUE 2	Edit	0	0	250	1	125
	6	0	16	RPM	Edit	ENGINE SPEED PT 3	Edit	0	0	64255	0.125	0
	8	0	8	%	Edit	PERCENT TORQUE 3	Edit	0	0	250	1	125
	9	0	16	RPM	Edit	ENGINE SPEED PT 4	Edit	0	0	64255	0.125	0
	11	0	8	%	Edit	PERCENT TORQUE 4	Edit	0	0	250	1	125
	12	0	16	RPM	Edit	ENGINE SPEED PT 5	Edit	0	0	64255	0.125	0
	14	0	8	%	Edit	PERCENT TORQUE 5	Edit	0	0	250	1	125
	15	0	16	RPM	Edit	ENGINE SPEED PT 6	Edit	0	0	64255	0.125	0
	17	0	16	%	Edit	GAIN ENDSPEED GOV	Edit	0	0	64255	0.00078...	0
	19	0	16	Nm	Edit	REFERENCE ENG TORQUE	Edit	0	0	64255	1	0
	21	0	16	RPM	Edit	MAX ENG OVERRIDE SPD	Edit	0	0	64255	0.125	0
	23	0	8	Sec	Edit	MAX OVERRIDE TIME	Edit	0	0	250	0.1	0
	24	0	8	RPM	Edit	SPEED CONTROL LOWER	Edit	0	0	250	10	0
	25	0	8	RPM	Edit	SPEED CONTROL UPPER	Edit	0	0	250	10	0
	26	0	8	%	Edit	TORQUE CONTROL LOWER	Edit	0	0	250	1	125

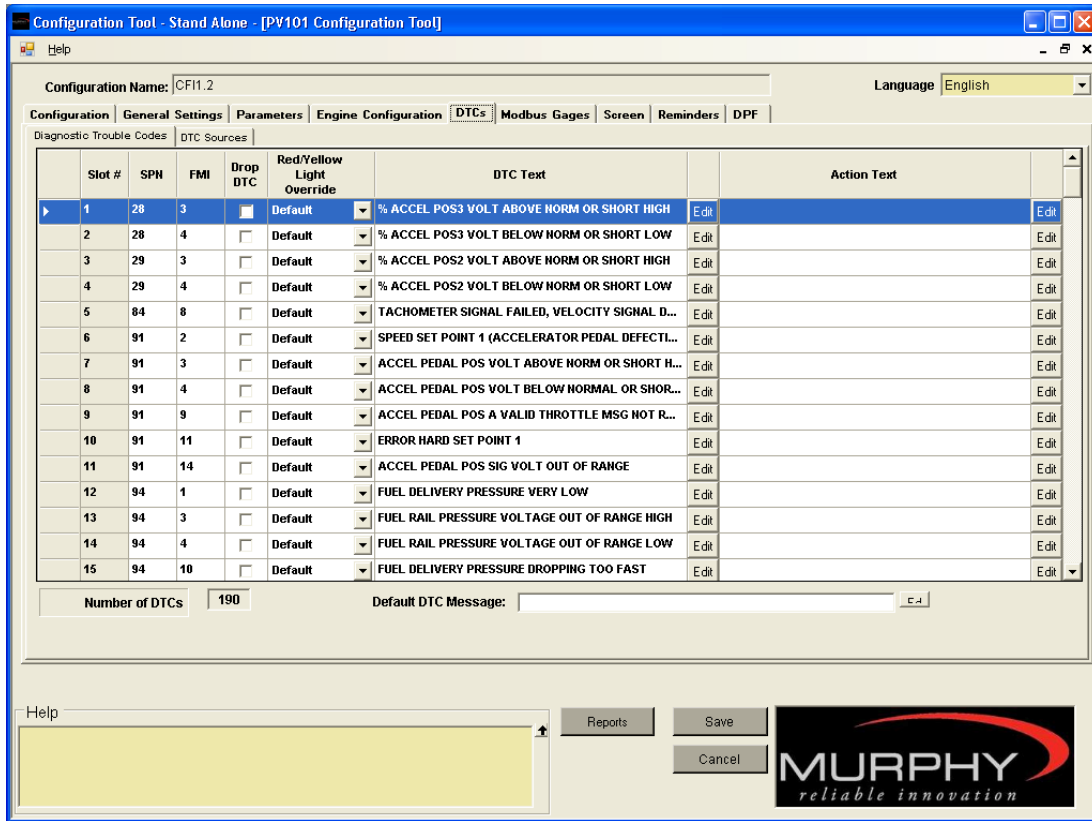
Help

Reports Save Cancel



For fields with an **[Edit]** button, you can click **[Edit]** to launch the Text Editor and make changes. Refer to **'Text Editor'** for additional information.

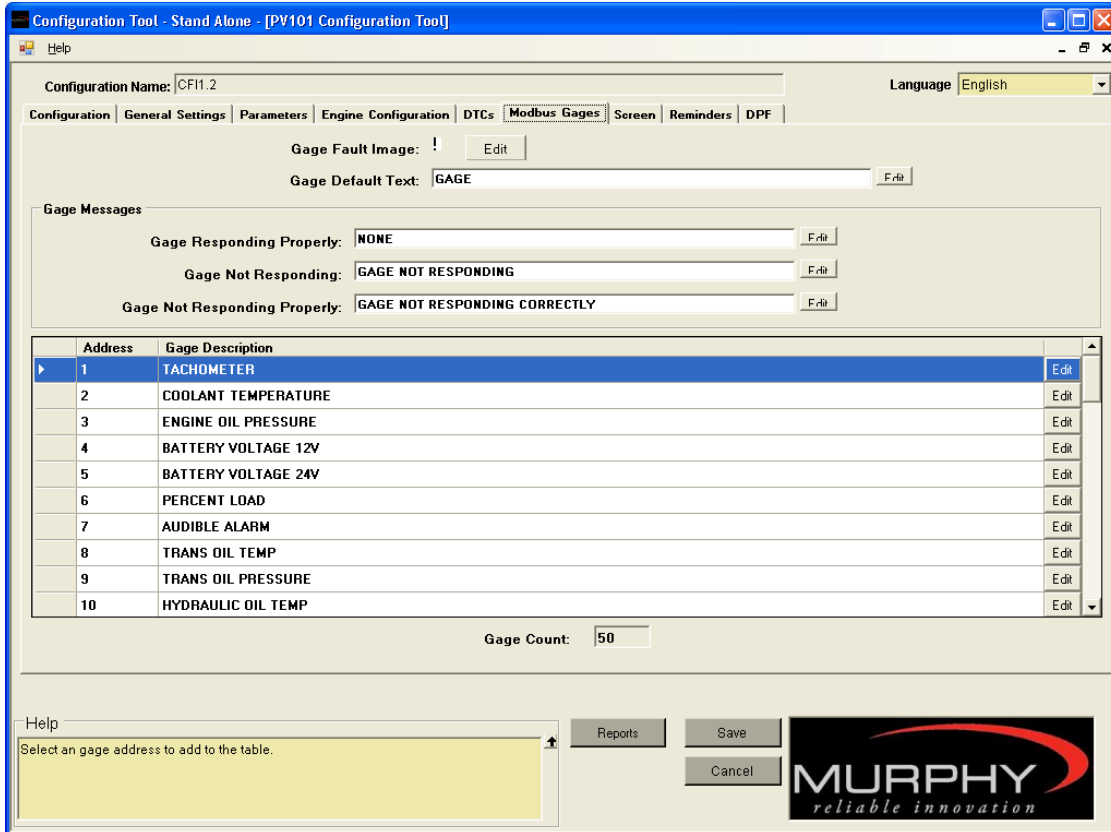
# DTCs



Under this tab you can view and define the Diagnostic Trouble Codes (DTC) for your configuration. You can edit the text for any of the trouble codes and you can provide an action to take in the event the trouble code is detected.

Field	Description
<b>Drop DTC</b>	Click box to select. If you select this box, this trouble code will not be recognized or used in your configuration.
<b>Red/Yellow Light Override</b>	Available choices: <ul style="list-style-type: none"> <li>• <b>Both</b> – both the red and the yellow light will be displayed.</li> <li>• <b>Default</b> – factory setting</li> <li>• <b>Red</b> – overrides default and displays the red light only</li> <li>• <b>Yellow</b> – overrides default and displays the yellow light only</li> </ul>
<b>DTC Text</b>	Click <b>[Edit]</b> to launch the Text Editor in order to make changes. Refer to ' <b>Text Editor</b> ' for additional information on the Text Editor.
<b>Action Text</b>	Click <b>[Edit]</b> to launch the Text Editor in order to make changes. Refer to ' <b>Text Editor</b> ' for additional information on the Text Editor. If the Action Text is left blank, then no action text will be displayed when a DTC is present.
For all other fields	Place the cursor in the field and view the <b>Help</b> box in the bottom left corner for additional information.

# Modbus Gages



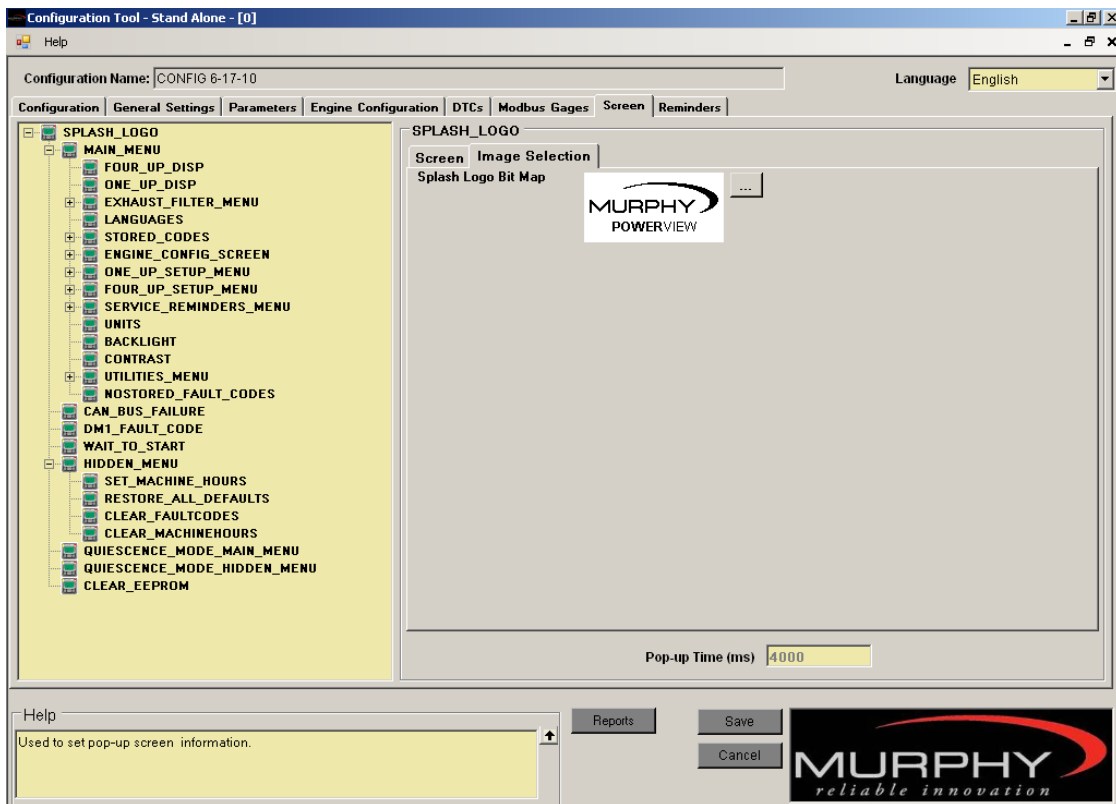
This tab supports 255 modbus gages.

All fields on this tab can be edited using the **[Edit]** button. To make changes, click **[Edit]** next to the desired field and the Text Editor is launched. Refer to 'Text Editor' for additional information.

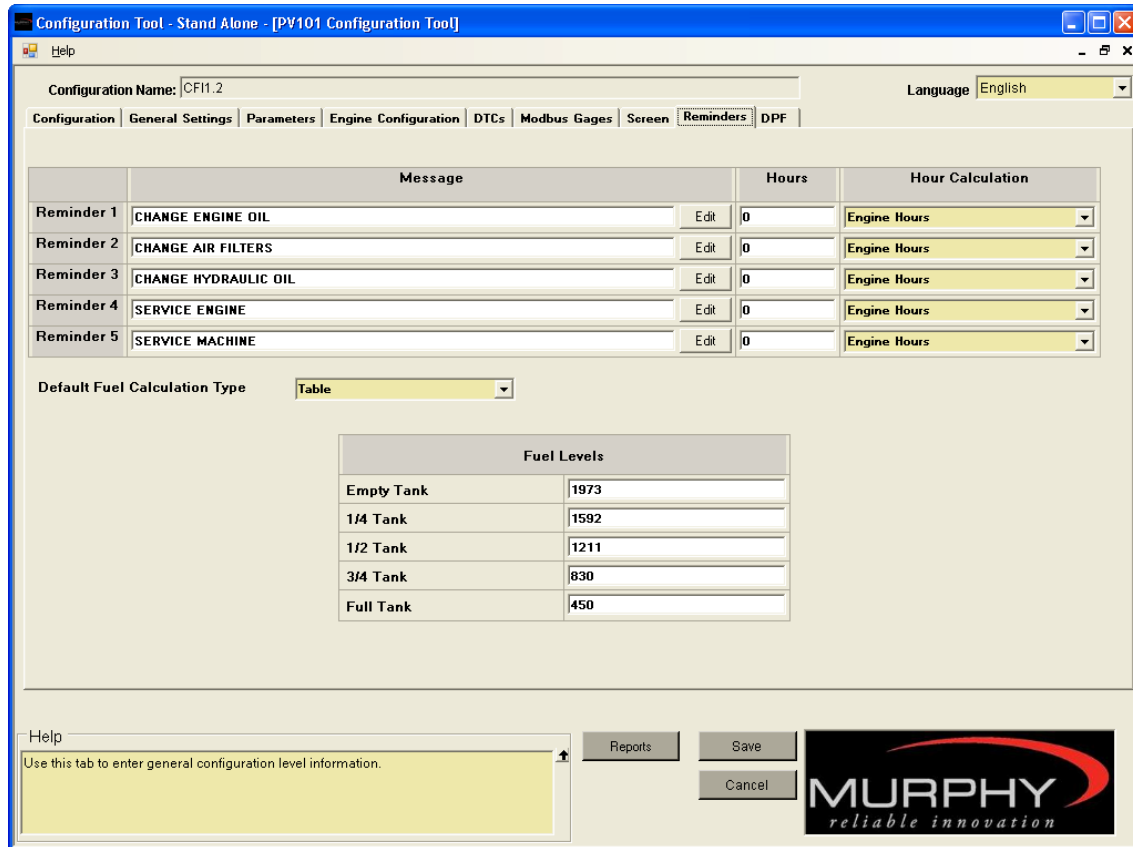
## Screen

Under the screen tab, you can change the strings in the program.

**NOTE:** It is important to keep in mind when editing strings. All of our default parameters and text strings are translated into ten languages. When you edit the text string, the translation is no longer valid. You will have to provide your own translations for unique parameter names and text strings.



# Reminders

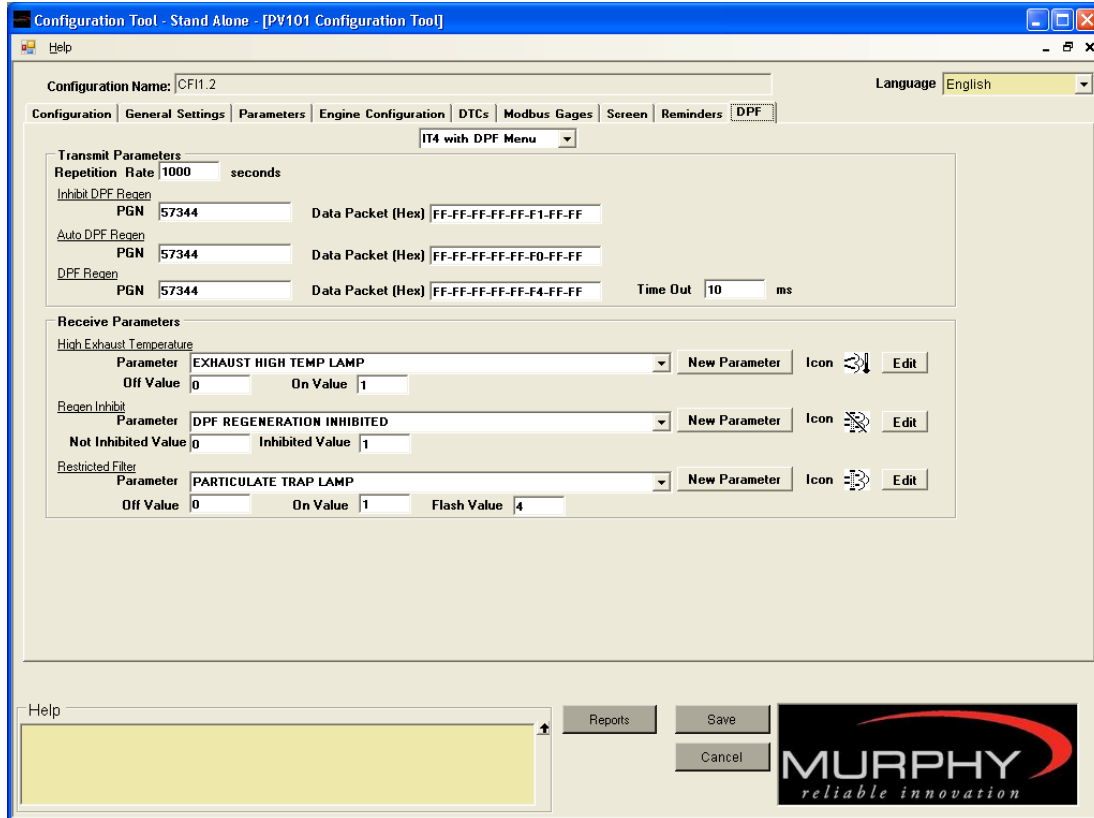


Reminders allow you to set up to 5 reminders that will be displayed on the PV101-C when their values are tripped.

You can change the message that will be displayed through the Text Editor. You will also enter the hours for the expiration timer to trip the reminder and specify how the hours are calibrated.

Field	Description
Hour Calculation	Available choices: <ul style="list-style-type: none"> <li>• Engine Hours</li> <li>• Machine Hours</li> </ul>
Default Fuel Calculation Type	Available choices: <ul style="list-style-type: none"> <li>• Set Points</li> <li>• Table</li> </ul>
For all other fields	Place the cursor in the field and view the <b>Help</b> box in the bottom left corner for additional information.

# DPF



NOTE: The new parameter button can be used to add a new parameter for DPF functions. When a parameter is added here, it is also added to the parameter tab. To add a parameter here requires that you be under the 70 parameter limit.

Field	Description
	Available choices: <ul style="list-style-type: none"> <li>• <b>IT4 Off</b> – Removes DPF as a menu item and turns DPF off</li> <li>• <b>IT4 with DPF Menu</b> – Adds DPF as a menu item</li> <li>• <b>IT4 with no DPF Menu</b> – Functions but not included as a menu item</li> </ul>
<b>High Exhaust Temperature</b>	All parameters listed under the ‘ <b>Parameters</b> ’ tab are available for selection.
<b>Regen Inhibit</b>	All parameters listed under the ‘ <b>Parameters</b> ’ tab are available for selection.
<b>Restricted Filter</b>	All parameters listed under the ‘ <b>Parameters</b> ’ tab are available for selection.
For all other fields	Place the cursor in the field and view the <b>Help</b> box in the bottom left corner for additional information.

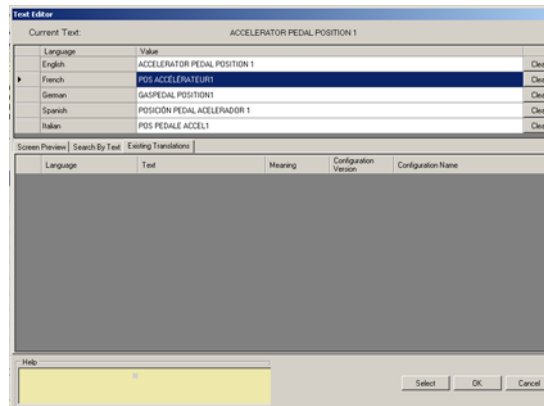
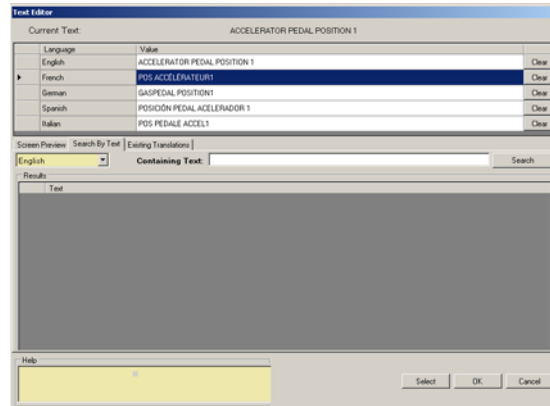
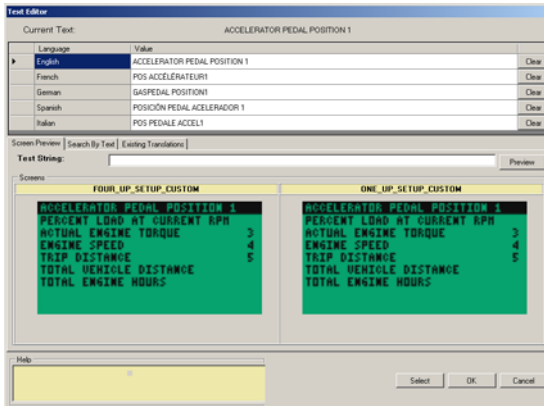
NOTE: For information on editing the icons displayed on your PV101-C, see the Image Editor section.



## Text Editor

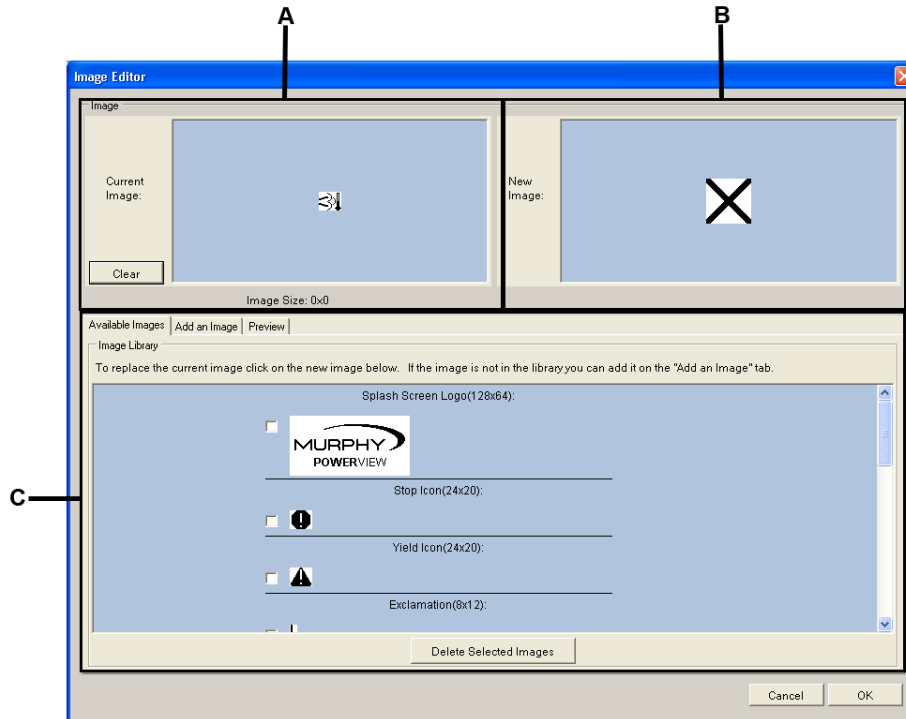
Almost every string in the configuration tool is editable. You know the string is editable when there is an **[Edit]** button next to the field.

It is important to keep in mind when editing strings. All of our default parameters and text strings are translated into ten languages. When you edit the text string, the translation is no longer valid. You will have to provide your own translations for unique parameter names and text strings.




## Image Editor

This editor allows you to edit the images (icons) that are displayed on your PV101-C. You can change the displayed images, add an image from your computer to the image library, delete an image from the library and you can preview how the image will be displayed on the PV101-C screen. There are three tabs under which you can work,



**Section A:** In this area, the currently selected image is displayed. The default images are contained in the library. If you click **[Clear]**, the image will be cleared from the Currently Image box.

**NOTE:** While the image is cleared from the Current Image box, it is not removed from the database, nor is it removed as the displayed image on the PV101-C.

**Section B:** In this area, the new image that you have selected is displayed: . When you have selected a new image, it will replace the X.

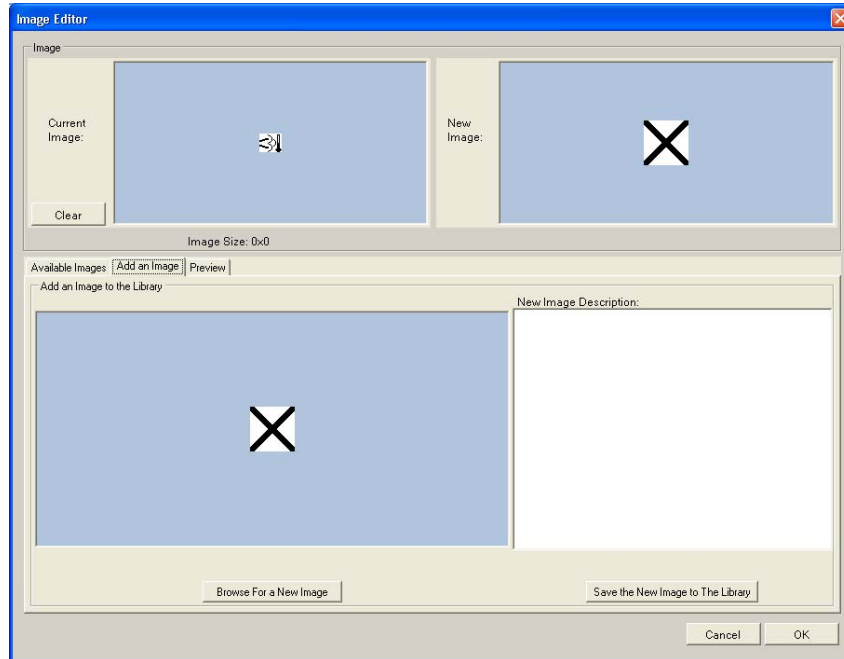
**Section C:** The action tabs are located in this section.

- **Available Images Tab:** Contains the image library from which you can select a new image or delete an image from the library. If you want to select a new image, click on the image. The new image will be displayed in Section B, the New Image window.

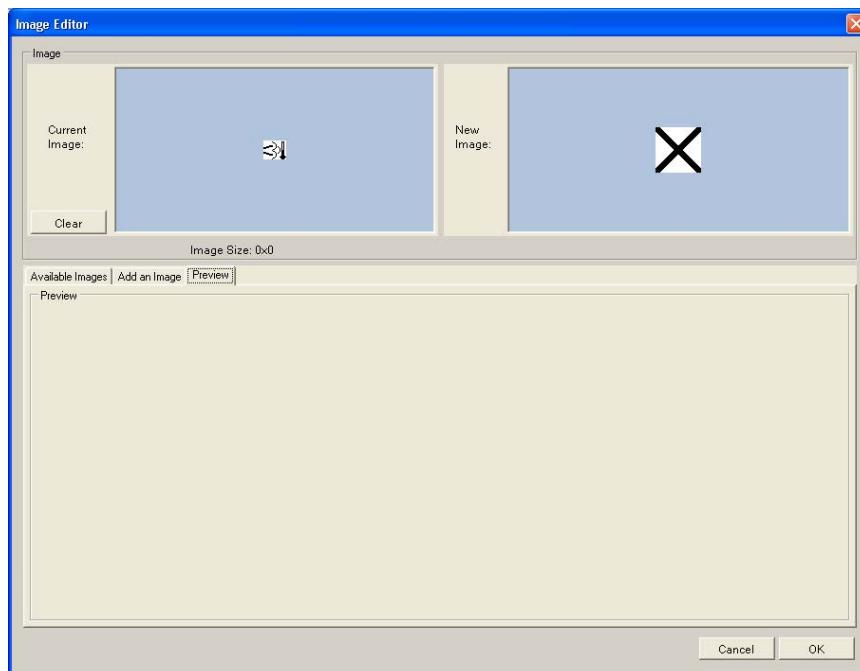
**NOTE:** If you do not see the new image in the New Image window, it will not be displayed in program.

To delete one or more images from the library, check the box next to the image(s) and click **[Delete Selected Images]**.

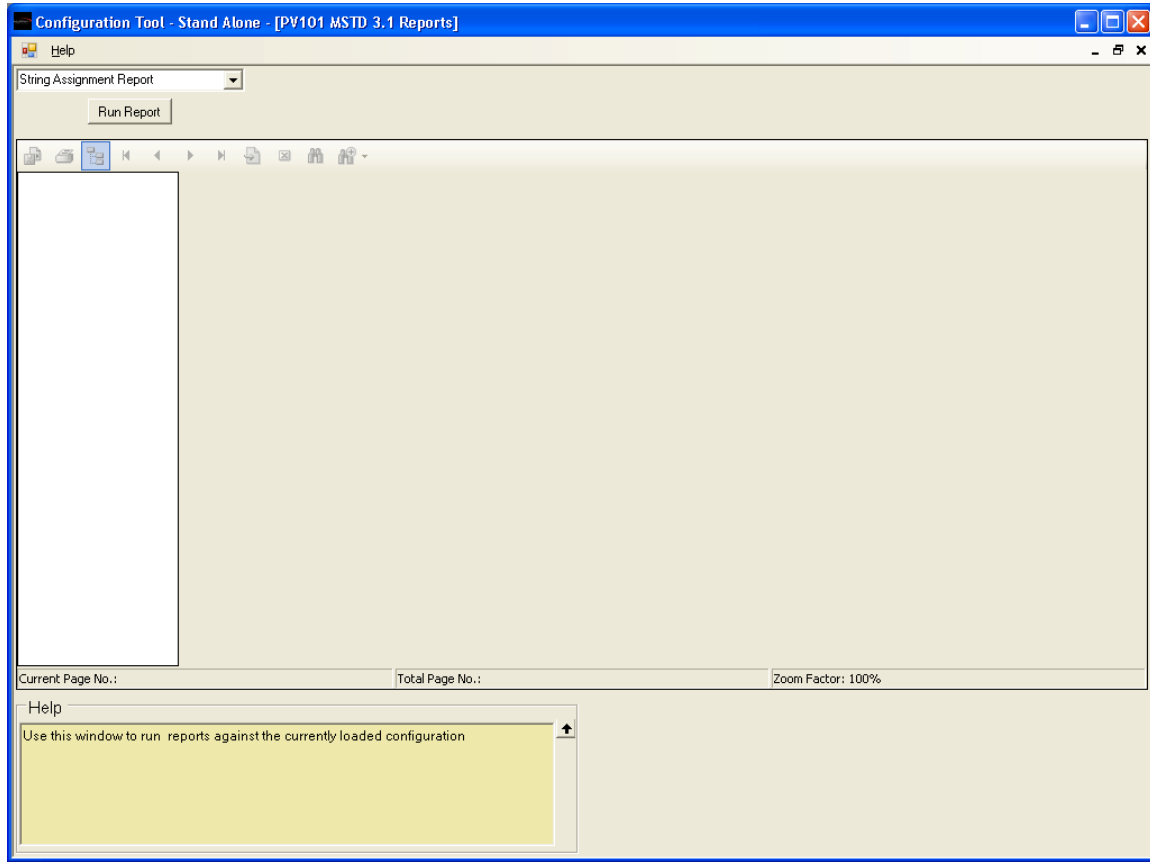
- **Add an Image Tab:** From here you can add an image to the image library. Once the image is added to the library, it can be selected from the **Available Images** tab.



- **Preview Tab:** From here you can view a mock of how the image will be displayed on the PV101-C screen. It will be displayed in the bottom portion of the screen.



# Reports



This module allows you to run a set of pre-defined reports on your configuration settings. You can view or print or export reports to other formats such as Excel, Word, and pdf files.

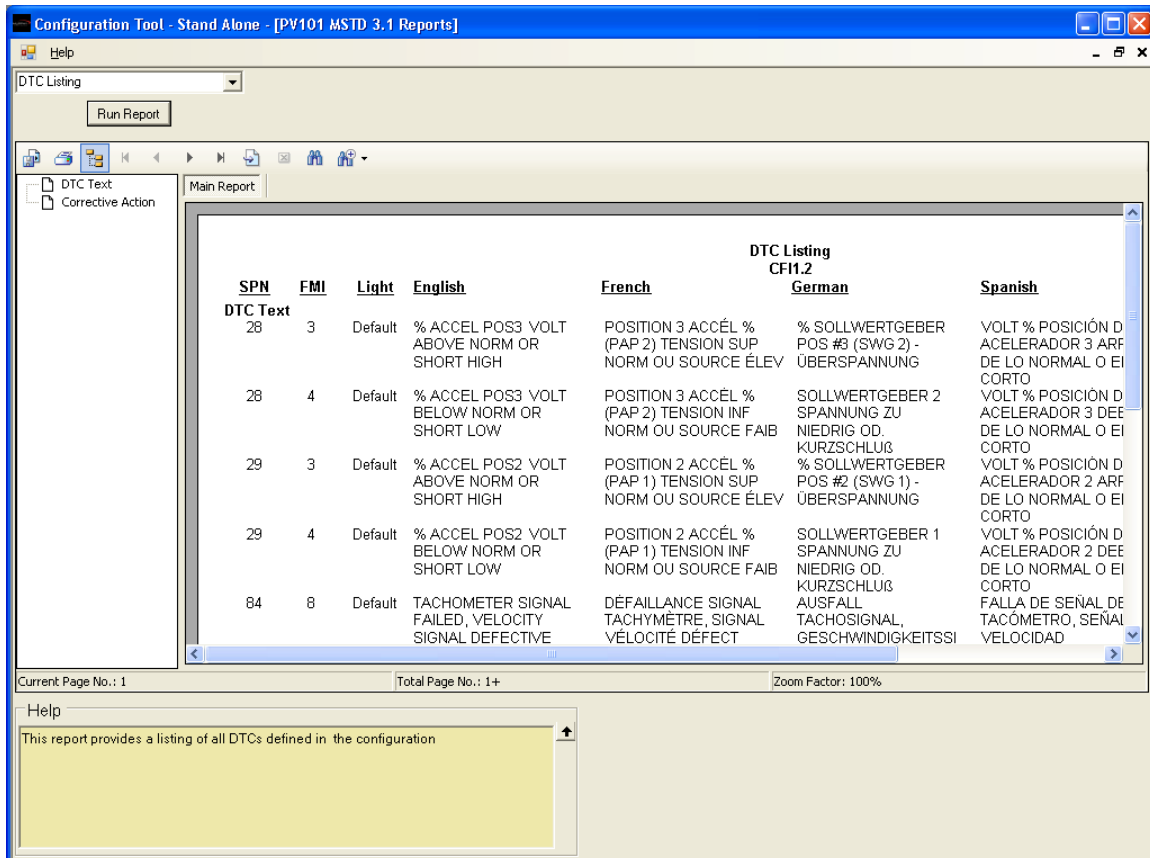
Available Reports include:

- **String Assignment Report** – provides listing of strings assigned to configuration fields
- **Parameter Report** – shows all parameters defined for a configuration
- **Configuration Comparison** – displays the differences between two configurations
- **DTC Listing** – provides a listing of all DTCs defined in the configuration
- **Text Field Listing** – provides a listing of all strings used by the configuration. All strings for the default language are listed by their translations.
- **DTC Source Listing** – lists the address and name of all DTC sources defined in the configuration
- **Parameters String Listing** – lists the parameter string values mapped to display screens
- **Gage Listing** – lists all modbus gages defined in the configuration with the description strings for all languages
- **Screen Fields** – provides a listing of strings assigned to configuration fields
- **Parameter Unit Validation** – provides a list of units for each measured parameter

- **Parameter QA Data Only** – returns all parameter data as one row per parameter for verification

To run a report, click the drop down list and select the desired report, then click **[Run Report]**.

The report is listed in the pane on the right.



The icons located across the top of the report allow you to perform the following actions:

- Export Report
- Print Report
- Toggle Group Tree
- Go to First Page
- Go to Previous Page
- Go to Next Page
- Go to Last Page
- Go to Page
- Close Current View
- Find Text
- Zoom



In order to consistently bring you the highest quality, full featured products, we reserve the right to change our specifications and designs at any time. MURPHY products and the Murphy logo are registered and/or common law trademarks of Murphy Industries, LLC. This document, including textual matter and illustrations, is copyright protected by Murphy Industries, LLC, with all rights reserved. (c) 2010 Murphy Industries, LLC.

**FW MURPHY**

P.O. Box 470248  
Tulsa, Oklahoma 74147 USA  
Phone: +1 918 317 4100 Fax: +1 918 317 4266  
E-mail: sales@fwmurphy.com

**INDUSTRIAL PANEL DIVISION**

Fax: +1 918 317 4124  
E-mail: ipdsales@fwmurphy.com

**MURPHY POWER IGNITION**

Web site: www.murphy-pi.com

**CONTROL SYSTEMS & SERVICES DIVISION**

P.O. Box 1819  
Rosenberg, Texas 77471 USA  
Phone: +1 281 633 4500 Fax: +1 281 633 4588  
E-mail: css-solutions@fwmurphy.com

**FRANK W. MURPHY LTD.**

Church Road, Laverstock  
Salisbury, SP1 1GZ, UK  
Phone: +44 1722 410055 Fax: +44 1722 410088  
E-mail: sales@fwmurphy.co.uk  
Web site: www.fwmurphy.co.uk

**COMPUTRONIC CONTROLS**

41 - 46 Railway Terrace  
Nechells, Birmingham, B7 5NG, UK  
Phone: +44 121 327 8500 Fax: +44 121 327 8501  
E-mail: sales@computroniccontrols.com  
Web site: www.computroniccontrols.com

[www.fwmurphy.com](http://www.fwmurphy.com)

**FW MURPHY INSTRUMENTS (HANGZHOU) CO., LTD.**

77 23rd Street  
Hangzhou Economic & Technological Development Area  
Hangzhou, Zhejiang, 310018, China  
Phone: +86 571 8788 6060 Fax: +86 571 8684 8878  
E-mail: apsales@fwmurphy.com



USA-ISO 9001:2000 FM 28221  
UK-ISO 9001:2000 FM 29422  
Registered Facilities



Printed in U. S. A.

12/02/09