



MURPHY®

by **ENOVATION** CONTROLS

POWerview® 1200

LARGE, FULL-COLOR DISPLAY BRINGS POWER TO RUGGED APPLICATIONS



12.3-inch wide-format display featuring rich color graphics

Powerful processor for smooth animations and video playback

8 GB flash memory storage

Easy-to-use configuration software

Bonded glare-free LCD screen for superior visibility in sunlight



Graphic interface not included, custom configuration required

The PowerView 1200 is a full-color configurable display that integrates vital engine, transmission and diagnostic information into an easy-to-read operator interface. This large 12.3-inch ultra-wide display features expansive storage and a high-speed processor to boot quickly and seamlessly showcase graphics, transitions and videos.

The display's bonded LCD can easily be viewed in full sunlight, and its available glove-friendly touchscreen and rugged design make it a perfect solution for all types of environments and applications.

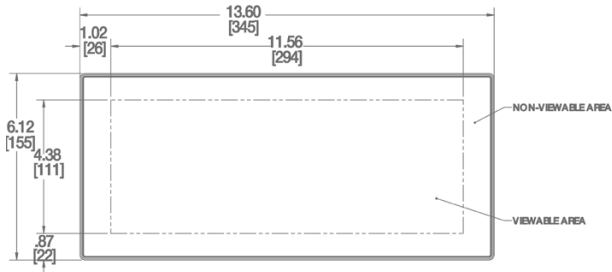
The PV1200 is available in glove-friendly touchscreen and non-touchscreen options.

Customization of the display is accomplished quickly via graphical programming or scripting with PowerVision Configuration Studio® software. This tool allows for quick creation of personalized user interfaces, custom parameters and specialized graphics for on-screen text, OEM branding and more.

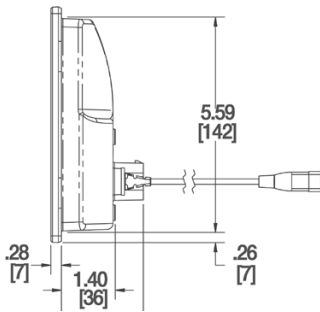
POWerview® 1200

DIMENSIONS

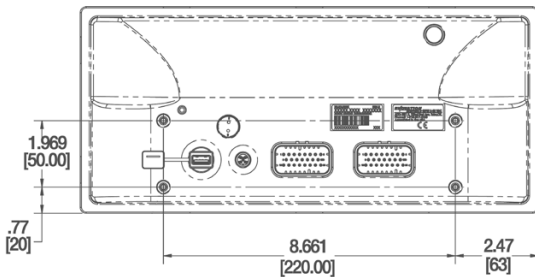
Front



Side



Back



SPECIFICATIONS

COMPUTING:

- Processor: Renesas® R-Car M2 with Arm® Cortex®-A15 dual-core processor @ 1.5 GHz (32-bit)
- Operating System: QNX® Realtime Operating System
- Storage: 8 GB flash memory
- RAM: 512 MB DDR3-SDRAM
- Graphics: Renesas graphics processor

DISPLAY:

- Screen Size: 12.3 inches (320 mm x 130 mm)
- Type: LVDS IPS LCD with LED backlight, 24-bit color
- Resolution: 1280 x 480
- Contrast Ratio: Typ. 800:1
- Brightness: 1000 cd/m²
- Surface: Anti-glare
- Touch Panel: Projected capacitive (PCAP) with glove touch

HARDWARE:

- Real Time Clock: Available with battery backup
- Connectors:
 - (2) AMPSEAL 23 pin (main)
 - (1) M12 5 pin [Ethernet] (optional)
 - (1) USB pigtail
- Video Input: (3) NTSC/PAL (single channel viewable)

COMMUNICATION:

- CAN: (2) CAN 2.0B according to ISO 11898-2, J1939 and proprietary messaging
- Serial: RS-485 serial (Modbus: master or slave)
- USB: USB 2.0 full speed host
- Ethernet: 1 X Ethernet 10/100 Base-T (optional)
- Wi-Fi: 802.11 b/g radio (optional)
- Bluetooth: Fully integrated Bluetooth 2.1, class 1 (optional)

ELECTRICAL:

- Operating Voltage: 6 – 36 VDC, reverse polarity protected
- Outputs:
 - (1) 500 mA switched low-side
 - (1) Frequency output (2Hz – 3KHz)
- Inputs:
 - (3) Analog 0 – 5 VDC, 4–20 mA, resistive, 10-bit resolution
 - (5) Discrete digital, active-high
 - (1) Frequency in (2Hz – 10kHz) 5V pk-pk min, 49V pk-pk max

ENVIRONMENTAL:

- Operating Temperature: -40°C to +70°C (-40°F to +158°F)
- Storage Temperature: -40°C to +85°C (-40°F to +185°F)
- Protection: IP66 and IP67, front and back, for outdoor use
- Vibration: 3.9 Grms (10 – 350Hz), 3 axes (ISO 15003)
- Shock: ±50G in 3 axes
- EMC/EMI: SAE J1113, ISO 13766, CE per 2014/30/EU

ENOVATION CONTROLS CORPORATE HEADQUARTERS
5311 S 122ND EAST AVENUE
TULSA, OK 74146

ENOVATION CONTROLS LTD. – UNITED KINGDOM
CHURCH ROAD LAVERSTOCK
SALISBURY SP1 1QZ UK

SUN MURPHY INTERNATIONAL TRADING (SHANGHAI) CO., LTD
B15 ROOM, 6# BUILDING, 351 SIZHUAN ROAD
SONGJIANG DISTRICT, SHANGHAI 201601, CHINA

ENOVATION CONTROLS INDIA PVT. LTD.
301, 3RD FLOOR, KRSNA CHAMBERS,
11 GALAXY GARDENS, NORTH MAIN ROAD,
KOREGAON PARK, PUNE 411001,
MAHARASHTRA, INDIA

U.S. SALES & SUPPORT

PHONE: 918 317 4100
EMAIL: SALES@ENOVATIONCONTROLS.COM
WWW.ENOVATIONCONTROLS.COM

MURPHY INDUSTRIAL PANEL DIVISION

PHONE: 918 317 4100
EMAIL: IPDSALES@ENOVATIONCONTROLS.COM

INTERNATIONAL SALES & SUPPORT

EUROPE, MIDDLE EAST, AFRICA
PHONE: +44 1722 410055
EMAIL: SALES@ENOVATIONCONTROLS.EU

CHINA
PHONE: +86 21 6237 5885
EMAIL: APSALES@ENOVATIONCONTROLS.COM

INDIA
PHONE: +91 91581 37633
EMAIL: INDIASALES@ENOVATIONCONTROLS.COM



FM 28221 (Tulsa, OK - USA)
FM 29422 (UK)