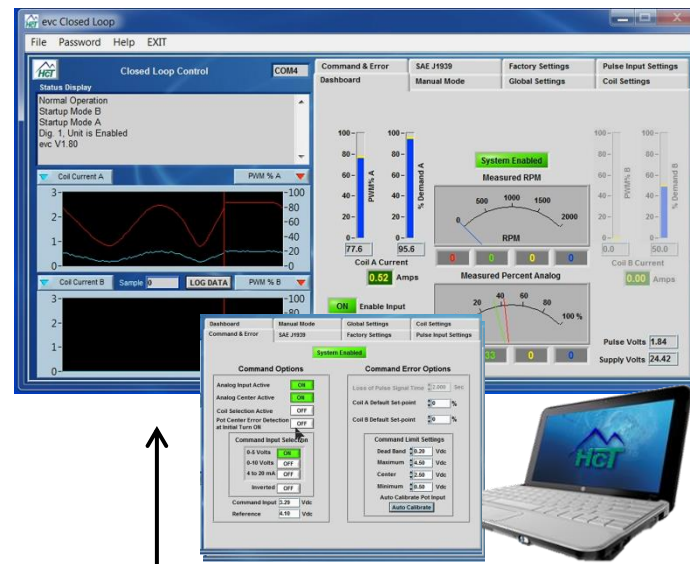


## EVC – CONFIGURABLE CONTROLLER

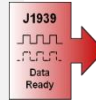
The EVC is a rugged configurable controller capable of simple open-loop valve/pump control or more complex functions including **Anti-Stall**, **Constant Pressure**, or **Speed Control**. Equipped with configurable inputs, this controller can be quickly configured for numerous application requirements. Due to its solid potted design, this module can be exposed to the most demanding environmental conditions while maintaining consistent and reliable performance.



+ Controller  
- Supply Power (9-32VDC, 250mA Max)

## CAN Bus COMMUNICATION

The EVC can receive J1939 Engine RPM for anti-stall applications in addition to transmitting **TSC1** messages for engine speed and torque control.



## GRAPHICAL USER INTERFACE

The EVC GUI is designed to handle multiple configurations. Pre-defined and selectable fields enables a user to quickly configure the EVC for open-loop or closed-loop functions. Designed for customers and channel partners who are relatively unfamiliar with sophisticated electronic control systems to customize the EVC controller in the field with minimal training and/or support.

- **FREE GUI** – download from HCT website
- **Save/Load** application data files via USB for repeatable solutions
- **Stock one product** – load different application profiles given diverse requirements for inventory management
- **Data logging** and **real time graphing** for troubleshooting and PID tuning
- **OEM password protected** settings

## OUTPUTS

The EVC is designed with two configurable outputs. Depending on the system requirements, the EVC can be configured to be a single valve driver or a bi-directional valve driver. Designed with 12-bit resolution and a unique current regulation process, the EVC is capable of precision proportional control making this a suitable solution for a wide range of valves.

## Mini-USB COMMUNICATION

- Power up the controller via USB connection and load an application data file from your computer.

## CONFIGURABLE SYSTEM INPUTS

- **2x analog inputs**
  - Input 1 – (0-5V, 0-10V, 4-20mA)
  - Input 2 – (0-5V, 0-10V, Pulse or Frequency 3 to 30KHz)
- **2x digital inputs**
  - All sinking (configurable system enable)
  - System enable
  - Manual coil select

