

HELMVIEW™ 1000i

Integrated



MURPHY

YOU DREAM IT. WE DELIVER IT.

IMAGINE... YOUR DREAM DISPLAY

Imagine you could change anything about your display – what would it be?
More integration? Full control? A truly unique interface?

That's the promise of the HelmView 1000i display.

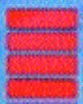
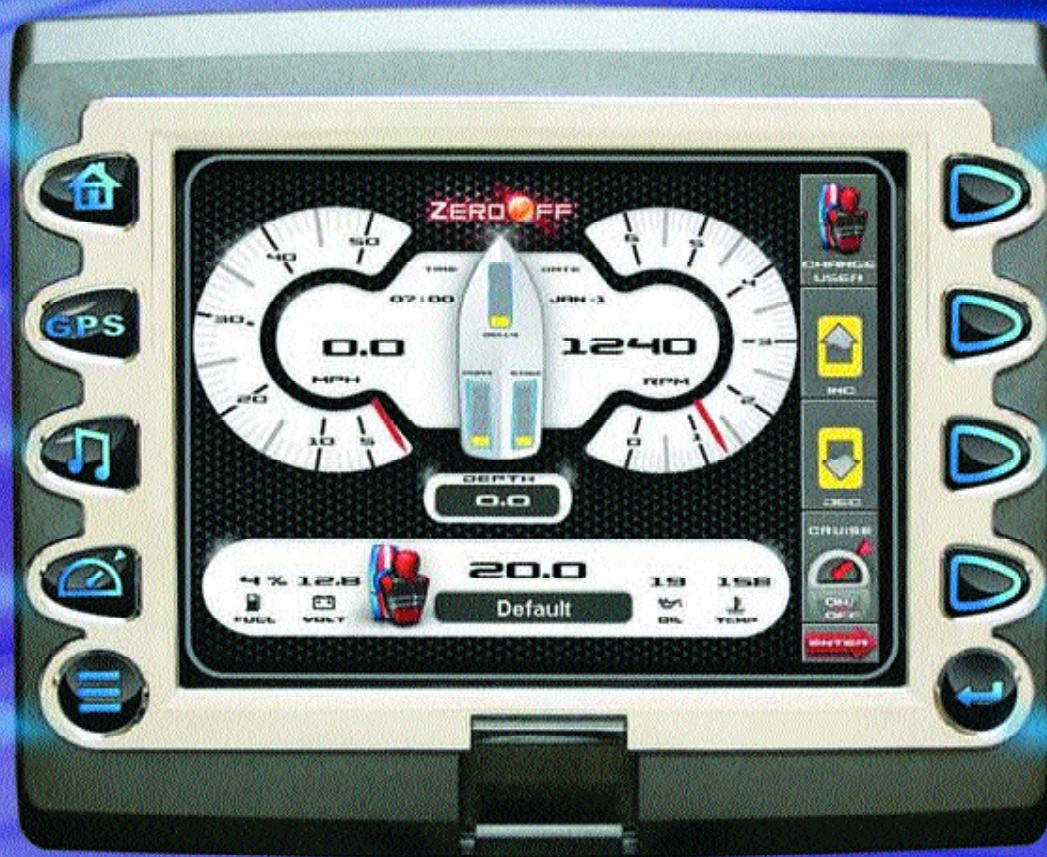
[TOTAL CUSTOMIZATION.] Total control of the design.

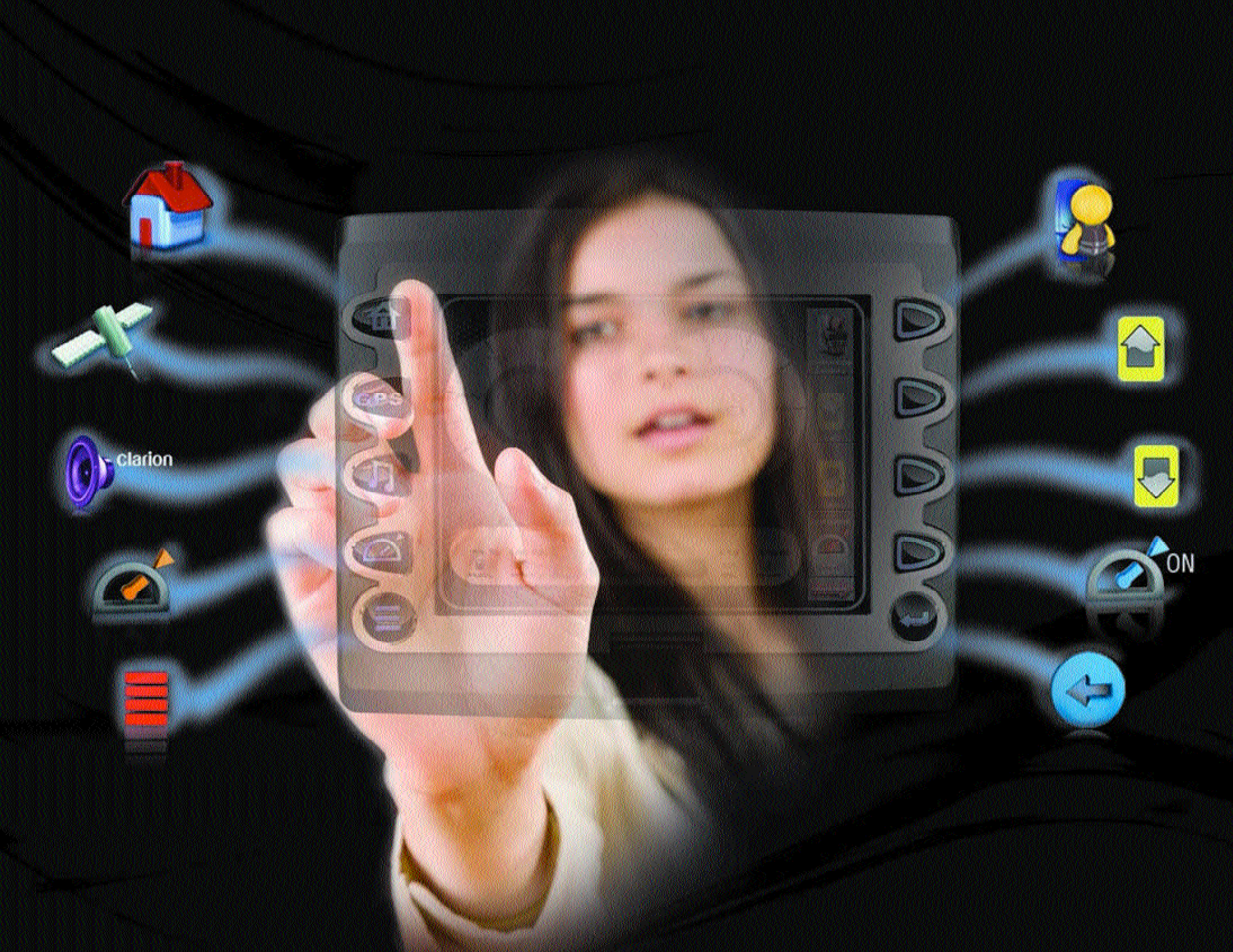
Your dream display brought to life.

We know how specific your boat brand is. We know how frustrating it is when
your innovations are copied by your competition. Not with this display.
The HelmView 1000i display changes with your application, not the other way around.

NOW THAT YOU'RE IN CONTROL...

WHAT WOULD YOU CREATE?





WHAT WOULD YOU CHANGE?

The HelmView 1000i is a CAN-based display with a fully-modular design. That opens up endless possibilities for quick and simple customization.

Each primary component of the HelmView 1000i display can be isolated, custom engineered and added to our production line quickly and easily.

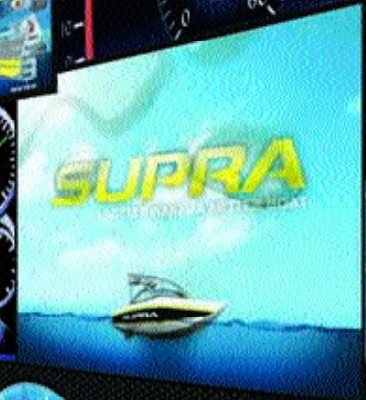
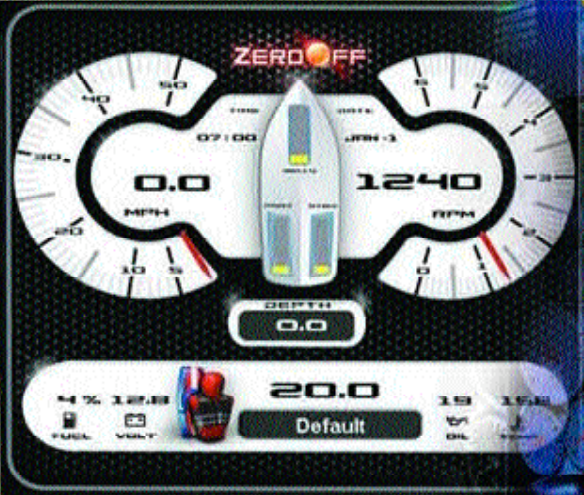
Don't like **the shape**? Change the bezel and buttons.

Need **extra inputs**? We'll modify the i/o board.

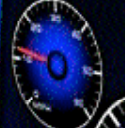
Want original screen layouts with **custom graphics and company branding**? We will be your design partner, working with you to give you total control...



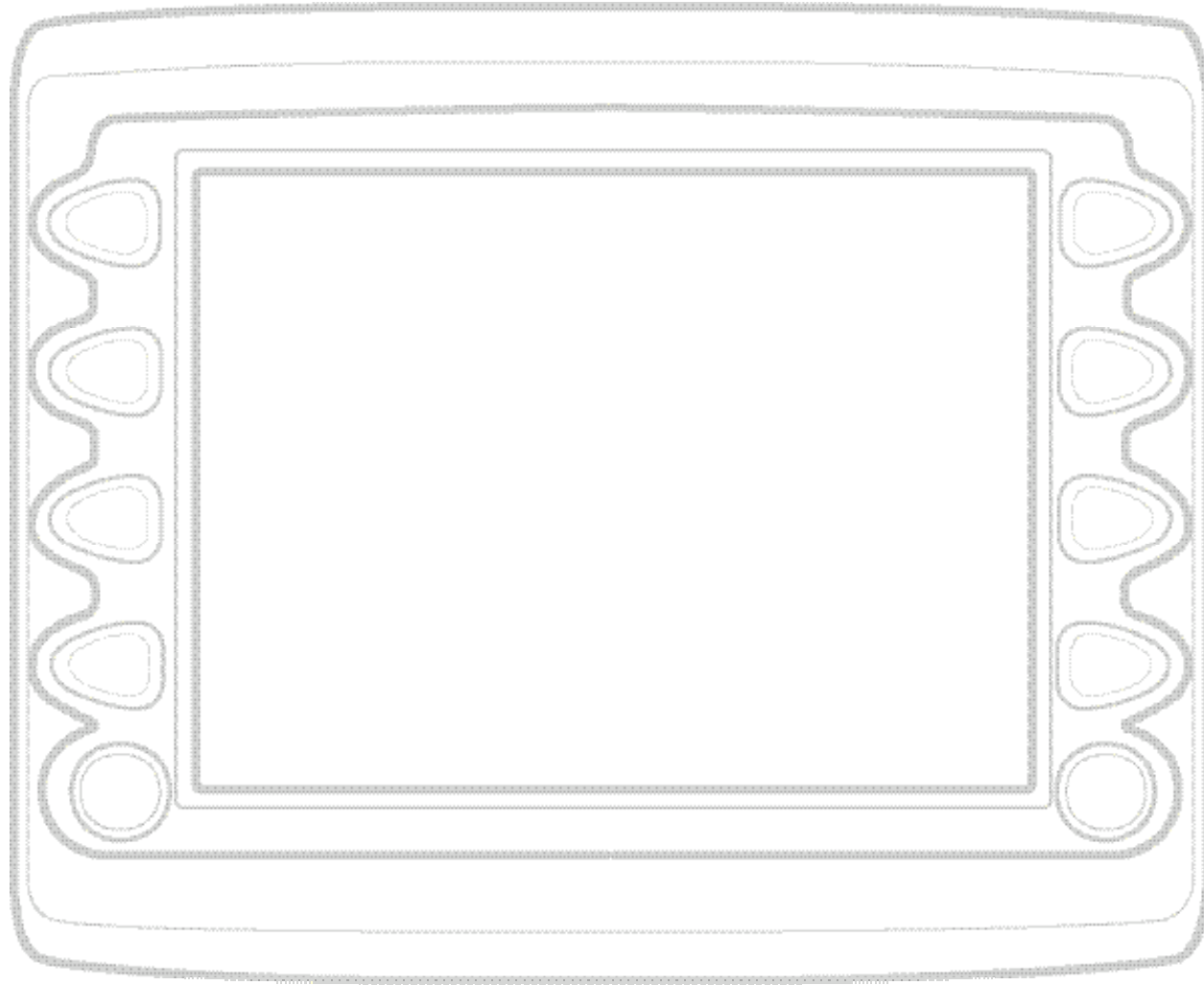
DONE, DONE AND DONE.



5208



CREATE YOUR OWN DISPLAY



**What would you do with a fully-customizable HV1000i display?
Use this sheet to trace anything you see in this brochure.**

This is one example of thousands of possible screens you can create on the HV1000i display. Your options include analog gages — bar graphics and text gages, along with things we haven't even invented yet (but YOU will).



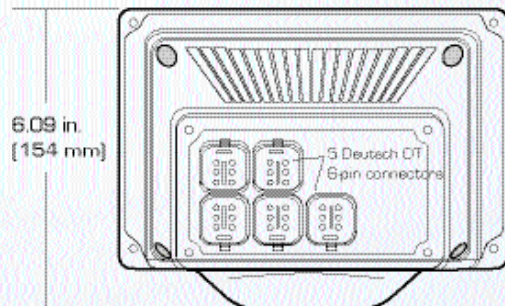
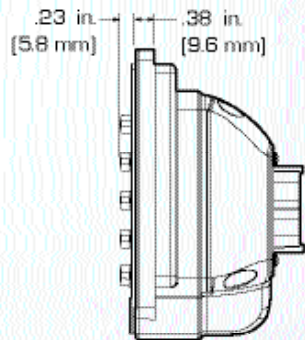
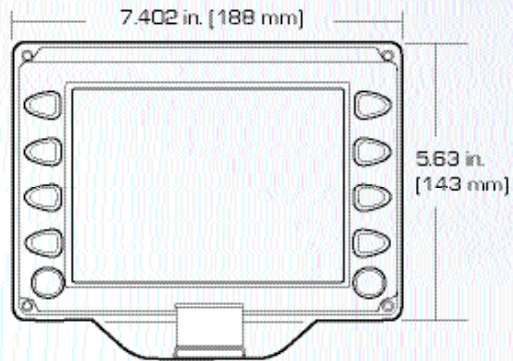
LET'S BRAINSTORM

Not sure where to start? Here are a few specific options available to get you thinking about the possibilities...

- Customize 100+ parameters, plus diagnostic codes and onscreen text.
- Link bitmaps to parameter data for graphic alarms.
- Upload your own bitmaps to design uniquely customized screens.
- Integrate video.
- Translate to multiple languages.
- Send updates easily through a standard USB interface.

TECHNICAL SPECS

TYPICAL DIMENSIONS



- Display: 6.4"/178mm color transmissive TFT LCD (fully bonded for visibility in direct sunlight)
- Resolution: VGA, 640 x 480 pixels, 16-bit color
- Aspect Ratio: 4:3
- Orientation: Landscape
- CCFL, 350 cd/m² (50,000 h lifetime) not replaceable
- Microprocessor: Sharp ARM9 LH7A404, 200 MHz, Phillips ARM7 LPC2194 70 MHz
- Micrium OS
- Flash Memory: 16 MB
- RAM: 64 MB SDRAM (I don't know why PV1000 spec. sheet mentions 32 MB)
- SD storage (optional): for program updates, map data, diagnostic data storage
- Operating Voltage: 7-32 VDC, protected against reverse polarity and load-dump
- Power Consumption: 10w full backlight; 22w full backlight with heater (< -10°C)
- CAN: 3 ports according to CAN specification 2.0B; 1 port isolated according to NMEA 2000 (GPS)
- RS 485: 1 MODBUS Master port ; 1 PROPRIETARY LIN Master port
- Video input (optional): NTSC/PAL
- Protocols: J1939, NMEA 2000 (GPS)
- Connection: 4 Deutsch 6 Pin Connectors, 2 Deutsch 8 Pin Connectors.
- Keyboard: 10 tactile buttons
- USB 1.1
- Inputs: (1) 0-32VDC analog input for Navigation Light
- Output: Digital, capable of sinking 500mA
- Case material: Polycarbonate back case

ENVIRONMENTAL SPECS

- Operating Temperature: -40° C to +70° C
- Storage Temperature: -40° C to +85° C
- Protection: IP67, front and back
- Emissions: IEC 60945, 95/54/EC
- Immunity: IEC 60945
- Vibration: Random vibration, 7.86 Grms(5-2000 Hz), 3 axis
- Shock: +/- 50G in 3 axis



FW Murphy

5311 South 122nd East Avenue

Tulsa, Oklahoma 74146 USA

Phone: +1 918.317.4100 Fax: +1 918.317.4266

E-mail: sales@fwmurphy.com

Web site: www.fwmurphy.com

Frank W. Murphy, LTD.

Church Rd. Laverstock,

Salisbury SP1 1QZ U.K.

Phone: +44.1722.410055 Fax: +44.1722.410088

E-mail: sales@fwmurphy.co.uk

Web site: www.fwmurphy.co.uk

FW Murphy Instruments (Hangzhou) Co. LTD.

77 23rd Street

Hangzhou Economic & Technological Development Area

Hangzhou, Zhejiang, 310018, China

Phone: +86.571.8788.6060 Fax: +86.571.8684.8878

E-mail: apsales@fwmurphy.com

HELMVIEW™ 1000i
Integrated