

Easy-to-use web portal for PC and smart mobile devices

Plug-and-play with easy setup

LTE communications for worry-free data networking

Designed for all weather environments



TRUSTED MURPHY MONITORING AND CONTROL AT YOUR FINGERTIPS

The Murphy CONNECT telematics unit provides simple and dependable communication power for PowerCore® controllers and panels. Murphy CONNECT is an easy, plug-and-play solution for rental fleets, agricultural and pump systems as well as other PowerCore controller and panel users wishing to automate or remotely monitor their engines.

The unit is controlled from a cloud-based dashboard that provides secure access from a computer or mobile device and is designed to be easy to use. Users can monitor equipment locations using the built-in GPS and set alerts for when it moves, create reports based on an engine's usage, control or schedule engine functions and establish alarms or warnings to protect the engine.

LTE cell technology provides worry-free data networking and allows you to stay connected from any location. (LTE service agreement required, initial 2-year service agreement included in purchase)

The IP67-rated telematics unit is built to survive all weather environments alongside PowerCore products with rugged protection from freezing temperatures, extreme heat, moisture and dust.

PLUG AND PLAY WITH POWERCORE® PRODUCTS



**IP
67**

MURPHY CONNECT TELEMATICS

1800024 01-2019

CONFIGURATION EXAMPLE

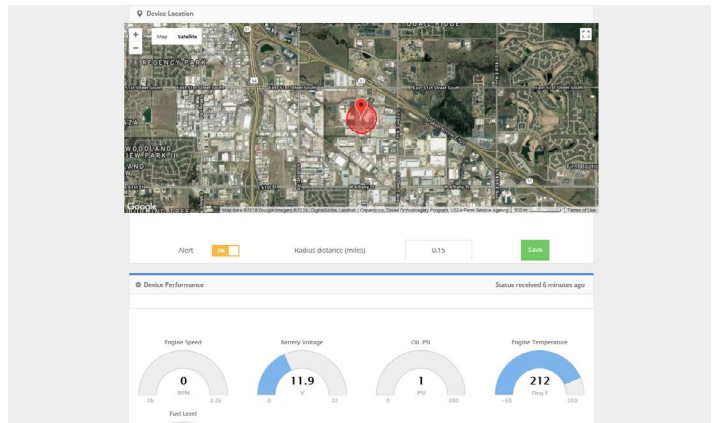


MURPHY CONNECT SPECIFICATIONS

COMMUNICATION	
CAN	(1) J1939 (Future use)
SERIAL	RS-485, (MODBUS RTU)
WI-FI	2.4GHz 802.11 b/g/n (Troubleshooting)
CELLULAR	LTE
CONNECTION	Amphenol AT06-08S
ELECTRICAL	
OPERATING VOLTAGE	9-36 VDC, reverse polarity protected
MAX VOLTAGE	9-36 VDC, reverse polarity protected
POWER CONSUMPTION	12 VDC: Transmitting: 265mA Idle: 135mA Off: 0.5mA (Using IGN to turn off) On: ~175mA Average 24 VDC: Transmitting: 135mA Idle: 90mA Off: 0.5mA (Using IGN to turn off) On: ~115mA Average
INPUTS	Digital: (Future use) [Shared with digital output]
OUTPUTS	Digital: (Future use) [Shared with digital input], protected

ENVIRONMENTAL	
OPERATING TEMPERATURE	-30°C to +80°C (-22°F to +176°F)
STORAGE TEMPERATURE	-30°C to +80°C (-22°F to +176°F)
PROTECTION	IP67
VIBRATION	Random vibration, 8.17 gRMS (5-2000 Hz), in 3 axes (Specification was met without the use of rubber isolation mounts)
SHOCK	25g in 3 axes (Specification was met without the use of rubber isolation mounts)

SCREENSHOT



WARNING: This product can expose you to chemicals including lead, which is known to the State of California to cause cancer. For more information, go to www.P65Warnings.ca.gov

FOR MODEL & PART INFORMATION

FOR MANUAL & SUPPORT DOCUMENTS

FOR SUPPORT & WARRANTY

ENOVATIONCONTROLS.COM/MURPHYCONNECT

SUPPORT.ENOVATIONCONTROLS.COM

ENOVATIONCONTROLS.COM/SUPPORT

SALES CONTACT

ENOVATION
CONTROLS®
www.enovationcontrols.com

CONTACT

✉ sales@enovationcontrols.com
☎ +1 918.317.4100

CORPORATE HEADQUARTERS

5311 S 122nd E Ave
Tulsa, Oklahoma, USA 74146

United States • United Kingdom • India • China



FM 28221 (Tulsa, OK-USA)
FM 29422 (UK)